

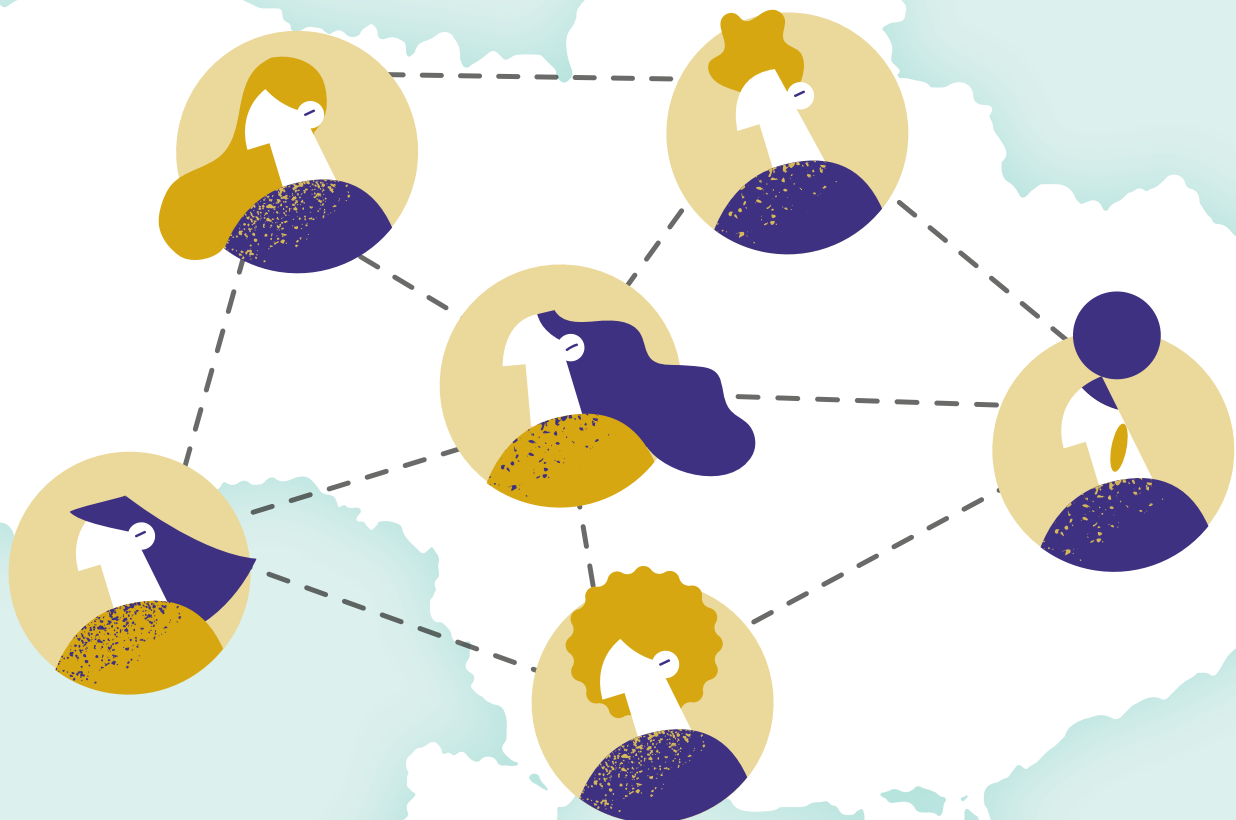


Ukraine
Humanitarian
Fund



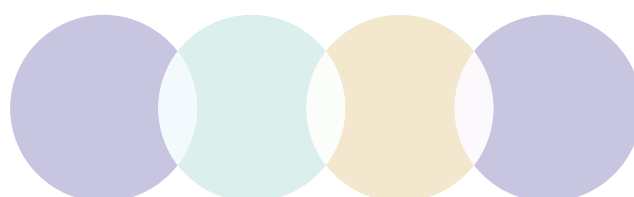
SOCIAL COHESION AND INCLUSIVENESS OF COMMUNITIES: THE STATE AND PROSPECTS FOR DEVELOPMENT IN UKRAINE

based on materials from the implementation
of the project “Be Poruch” Centre for Social Cohesion



CONTENTS

INTRODUCTION	4
1. SAMPLE STRUCTURE	7
2. THE CONTEXT AND CURRENT PROBLEMS OF COMMUNITIES WHICH MAY BE SOLVED (IMPROVED) AS A RESULT OF INCREASED COHESION	10
3. POSSIBLE MEANS OF EXPANDING AND INCREASING SOCIAL COHESION OF COMMUNITIES	17
4. ASSESSMENT OF THE ACHIEVED LEVEL, FACTORS AND PROSPECTS FOR ENHANCING THE COHESION OF COMMUNITIES	22
CONCLUSIONS	36
RECOMMENDATIONS	40



INTRODUCTION

Russia's military aggression against Ukraine has extremely aggravated the problem of lack of resources crucial for the development and simple survival of territorial communities. Preserving the functionality of social infrastructure and preventing the marginalization of the socially vulnerable segments of the population take place in extremely unfavourable conditions: the aggravation of the shortage of skilled labour through the large-scale demand of the Defense Forces and the military-industrial complex, the loss of production potential, resources and sales markets due to destruction and occupation by the Russian military, radical reduction of the domestic tax base for the financing of budget expenditures, and the same radical increase in load on the social infrastructure with tens of thousands of war victims: people who suffer physical injuries, mental traumas, exacerbation of chronic diseases compared to overstrain and disruption of their established daily routine. Under such conditions maintaining the balance of "individual and collective" acceptable in peacetime creates the threat of undue waste of human potential. It makes the concept of "social cohesion"^{1,2} especially relevant, particularly in the context of the search for forms of social interaction that will allow the community not only to survive but also to be able to increase their welfare in the process of postwar restoration, by preserving unity and integrity when the success of some social groups results in the improvement of life conditions and functioning of others, and the elimination of barriers for productive interaction within and among the groups generates powerful synergistic effects.

Our research focuses on the definition of social cohesion as "the characteristics of society which deals with the connections and relations between such social units as individuals, groups, associations as well as territorial communities. The key aspects of social cohesion are strong social relations, shared values, a sense of community identity and belonging to a single community, trust among members of the community as well as the degree of inequality and inconsistency"³.

To select quantitative characteristics of the potential for increasing and expanding social cohesion of the community and evaluate the actual achievements of the community that has become the object of the sample survey, we proceed from two main forms of social cohesion.

1 Atlee, T., *The Tao of democracy: using co-intelligence to create a world that works for all*, The Writers' Collective, Cranston, RI, July 2003.

2 *Concerted development of social cohesion indicators Methodological guide*. Council of Europe, August 2005

3 *SOCIAL COHESION AND DEVELOPMENT OF OPPORTUNITIES IN UKRAINIAN COMMUNITIES Training Materials* of International Organization for Migration (IOM), Representative Office in Ukraine. Kyiv, 2015.

“(1) The first dimension can be shortly denoted as the inequality dimension. It concerns the goal of promoting equal opportunities and reducing disparities and divisions within a society. This also includes the aspect of social exclusion. (2) The second dimension can be shortly denoted as the social capital dimension. It concerns the goal of strengthening social relations, interactions and ties and embraces all aspects which are generally considered as the social capital of a society” (Berger-Schmitt, 2002: 404–405).⁴

Therefore, our research is primarily focused on the characteristics of inequality, prevalence and depth of deprivation of socially vulnerable community members, in particular IDPs, comparing the indicators of their economic activity and successful interaction with authorities to the similar indicators of the permanent population. Thus we will be able to evaluate the success of the integration of IDPs in the hosting communities as a significant factor in the assessment of the social cohesion of communities.

Another object of our research is the characteristics of the capacity of community members to engage in collective activities, coordinate issues concerning meeting collective needs, and interact with representatives of business, state and local authorities, accumulation of social and humanitarian aid and ensuring their targeting to the sector.

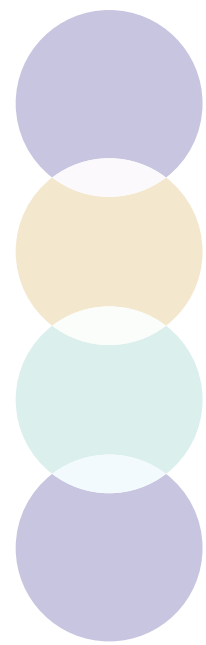
Accordingly, the investigation is aimed at solving the following tasks:

- assessment of the potential for solving urgent problems of Ukrainian territorial communities, which may result in a significant increase in social cohesion;
- assessment of the degree of implementation, factors and available reserves for improvement of the conditions of functioning of social infrastructure objects and eliminating extreme inequality and deprivation in the Cherkassy territory community on the basis of which the sample survey has been conducted.



4 Regina Berger-Schmitt Considering Social Cohesion in Quality of Life Assessments: Concept and Measurement Social Indicators Research Vol. 58, No. 1/3, Assessing National Quality of Life and Living Conditions (Jun., 2002), pp. 403-428.

Primary data have been collected through online survey of representatives of the Cherkasy territorial community. The sample is unrepresentative in its structure and scope but allows us to form a general idea of the prevalence and depth of inequality and of the prevalence and effectiveness of various forms of organization of collective activities in the territorial communities of Ukraine, established in the districts of cities of regional significance and in small settlements around these cities. Approximately equal representation in the sample of respondents with IDP status and representatives of the permanent population of communities, women and men, allows to reach statistical significance of the majority of the identified differences in the characteristics of IDPs and the permanent population and gender gaps with the error probability of $p = 0.05$.



1. SAMPLE STRUCTURE

The average age of respondents is 41.4 years old (41.5 for women and 41.2 for men – Table 1.1), which is close to the average indicator for the entire population of Ukraine – 42.2 years old for the population of both genders, 39.4 for men and 44.7 for women. Whereas the division of respondents into the age groups is significantly different from the age structure of the population of Ukraine. The majority of the respondents are people from 20 to 45 years old, they constitute 57.7% of the total number of the sample, although the structure of the entire population of Ukraine includes approximately 30% of these age groups⁵. This deviation is related to the procedures for collecting information (representatives of the oldest and youngest age groups were obviously less likely to be included in the sample which was formed by voluntarily filling in online questionnaires), as well as to the purpose of the survey. The survey focuses on socially active able-bodied individuals who not only act as an object of aid and solving problems of the integration of IDPs into the community, but also by their powerful active actions contribute to the formation of social networks and the accumulation of social capital, which reveals better opportunities for using the resource potential of communities for improvement (protection from the risks of war) of the welfare of the community as a whole and its most vulnerable members, both from among the permanent population and IDPs.

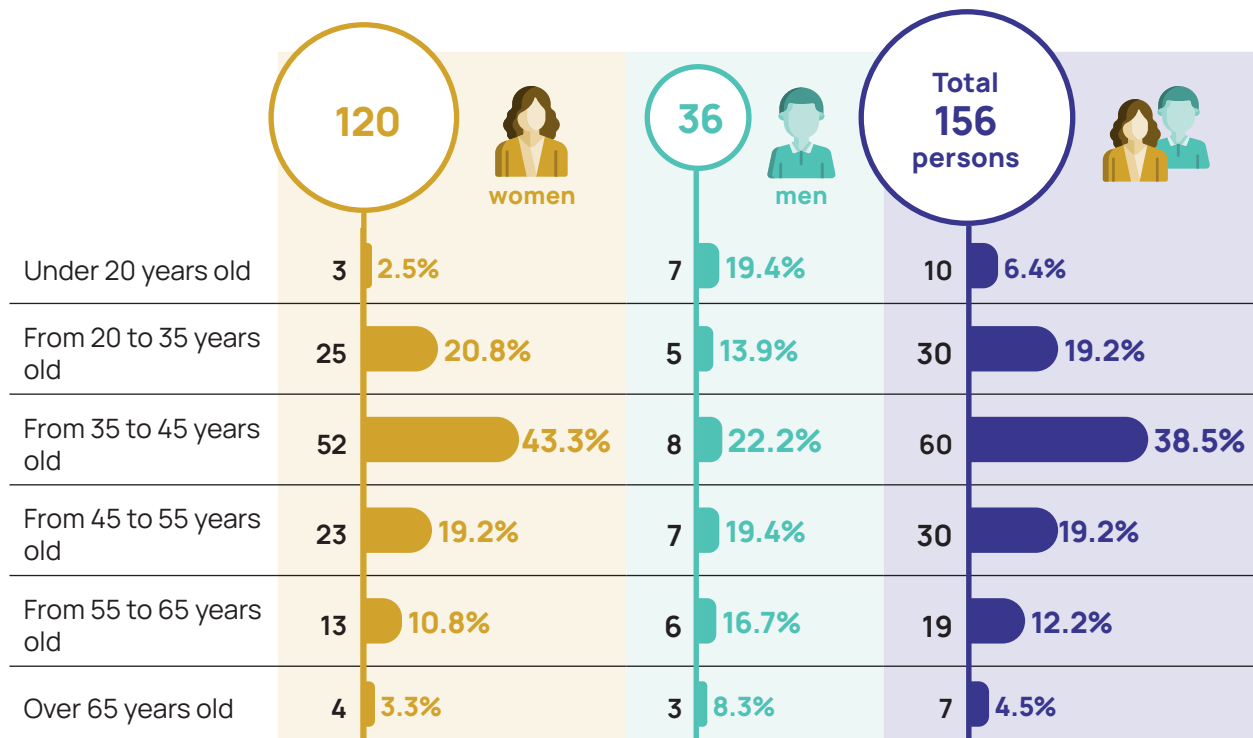
Obviously, the research mainly covers those age groups of the population on which, according to the original hypotheses, main expectations are placed for further strengthening and dissemination of the principles of social cohesion in the communities of Ukraine. Demographically, such definition is also close to the interpretation of the concept of “able-bodied persons”, which is used in the “Framework Program of the Inter-Agency Standing Committee in search of long-term decisions in the interests of internally displaced persons”⁶.

5 State Statistics Service of Ukraine, official website. Section “Population and Migration”. www.ukrstat.gov.ua

6 Framework Program of the Inter-Agency Standing Committee in search of long-term solutions in the interests of internal movements of people. - URL: <https://interagencystandingcommittee.org/system/files/2021-03/IASC%20Framework%20on%20Durable%20Solutions%20for%20Internally%20Displaced%20Persons%2C%20April%202010.pdf>

Table 1.1

Socio-demographic structure of the sample



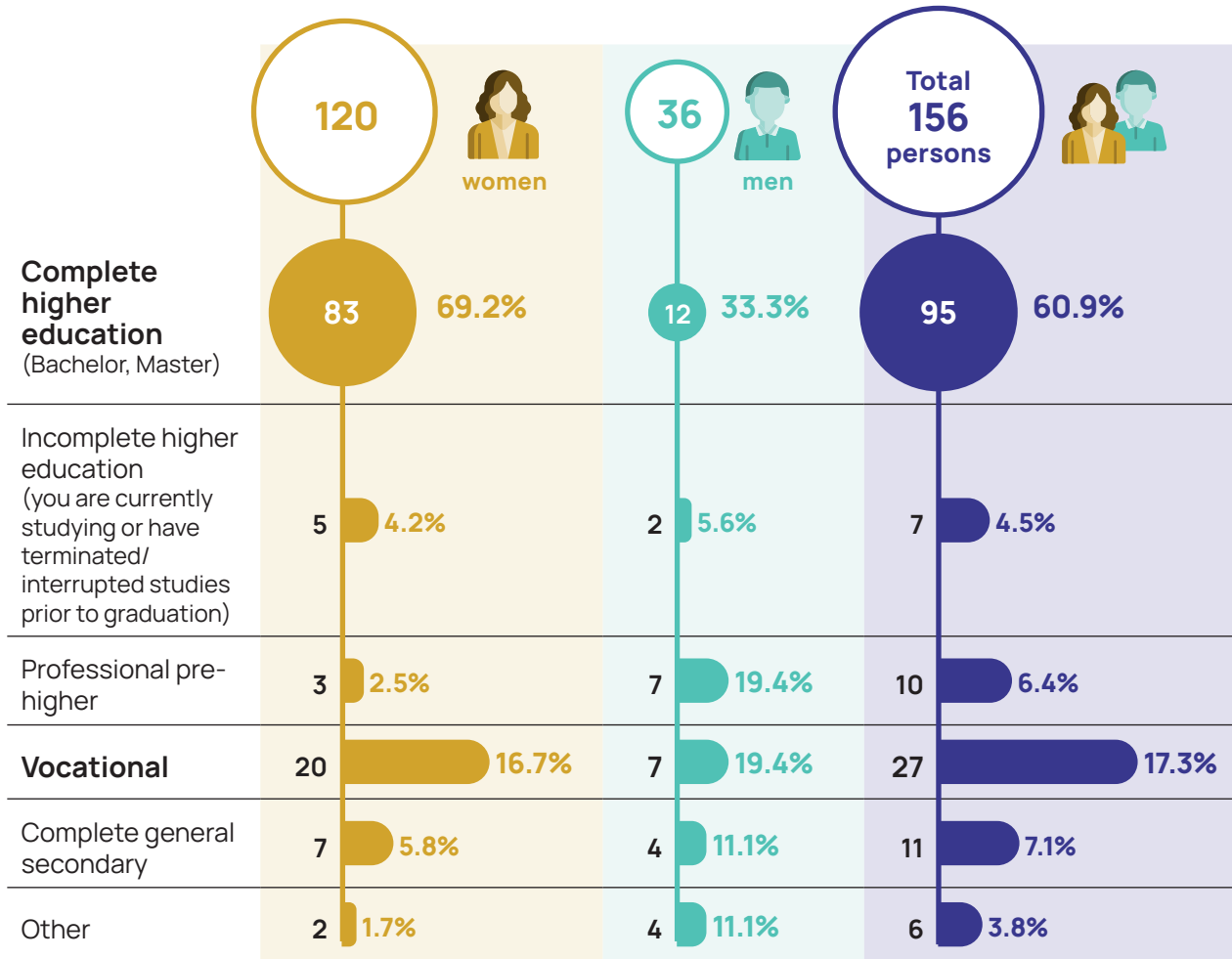
The distribution of respondents according to the educational level illustrates significant changes in the structure of the population during the war. Since peacetime statistics traditionally showed close proximity of the proportion of division between groups from different educational backgrounds for women and men⁷, in the structure of our sample there are significant differences between women and men. Among women, respondents with complete higher education constitute the vast majority (69.2%), while among men 33.3% of the respondents have complete higher education. However, among the male respondents there are more representatives of the group “Professional pre-higher education” – 19.4% versus 2.5% among women.

Thus, the average educational level of the female respondents is considerably higher than that of the male respondents, which may indicate the formation of similar trends among the population not covered by mobilization and service in the Ukrainian Defense Forces under contract.

⁷ State Statistics Service of Ukraine, official website. Section “Population and Migration”. www.ukrstat.gov.ua

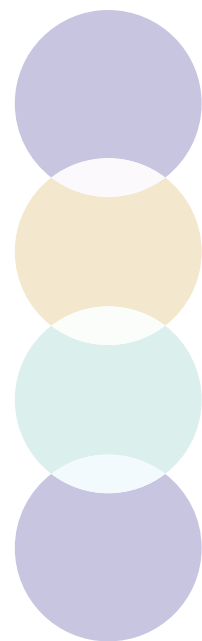
Table 1.2

The distribution of the respondents according to the educational level



The differences in the educational levels of male and female components of the sample will be taken in account for the interpretation of the gender gaps that might be revealed regarding the prerequisites, factors, characteristics of social activity and effectiveness of the participation in fostering cohesion of communities.

2. THE CONTEXT AND CURRENT PROBLEMS OF COMMUNITIES WHICH MAY BE SOLVED (IMPROVED) AS A RESULT OF INCREASED COHESION



The selection of quantitative characteristics of the research is based on the concept of social cohesion as a characteristic of a community which manifests itself through the collective activities aimed at the elimination of barriers and artificial restrictions for the community members to improve their material welfare and psychological comfort. Therefore, we proceed from the critical importance of the relations between socially vulnerable groups and the community and resource provision as well as institutional framework of programs and individual measures implemented according to the capabilities of the community and directed on improving welfare of its vulnerable members. Thus, the scale of the problems faced by the community forms the context in which the conditions, characteristics and results of the formation of social cohesion are examined. In fact, the scale of the challenges to the social cohesion of the community forms the space in which the achievements of its social cohesion are evaluated.

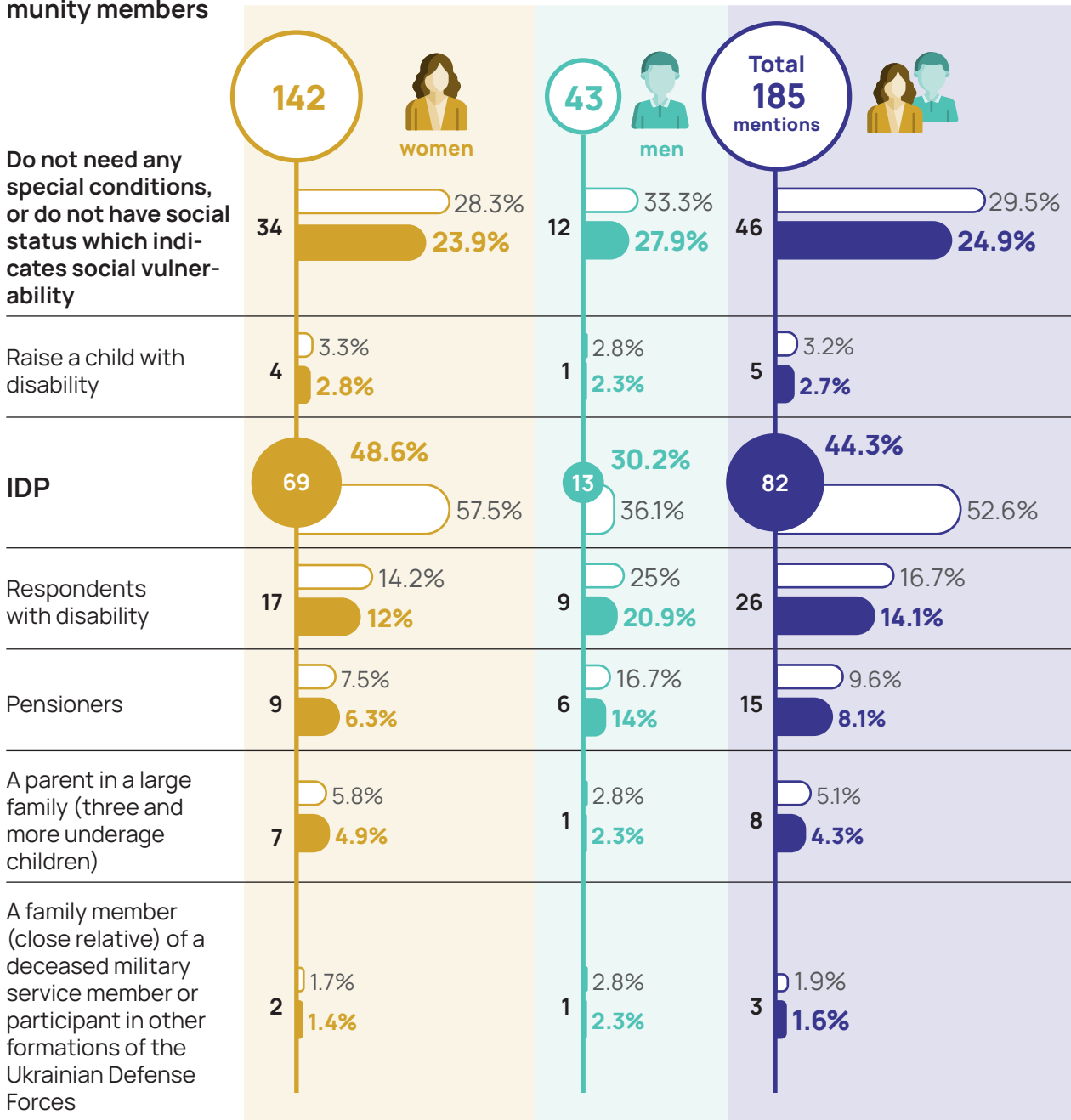
The data on the prevalence among respondents of those who may have a special medical or social status related to the restrictions on self-care, welfare and access to social mobility opportunities are summarized in Table 2.1.

According to the data in the table, a total of 29.5% of respondents indicated that they do not have any special medical or social status. Among the men the figures are slightly higher (33.3% versus 28.3% among the women), but the small number of the sample does not allow us to consider the difference as statistically significant.

52.6% of the respondents have IDP status; (57.5% among women and 36.1% among men); 16.7% have disabilities (14.2% among women and 25% among men); 9.6% are pensioners (7.5% among women and 16.7% among men); 5.1% of the respondents are single parents in large families (5.8% of women and 2.8% of men); 3.2% of the respondents raise children with disabilities (3.3% of women, 2.8% of men).

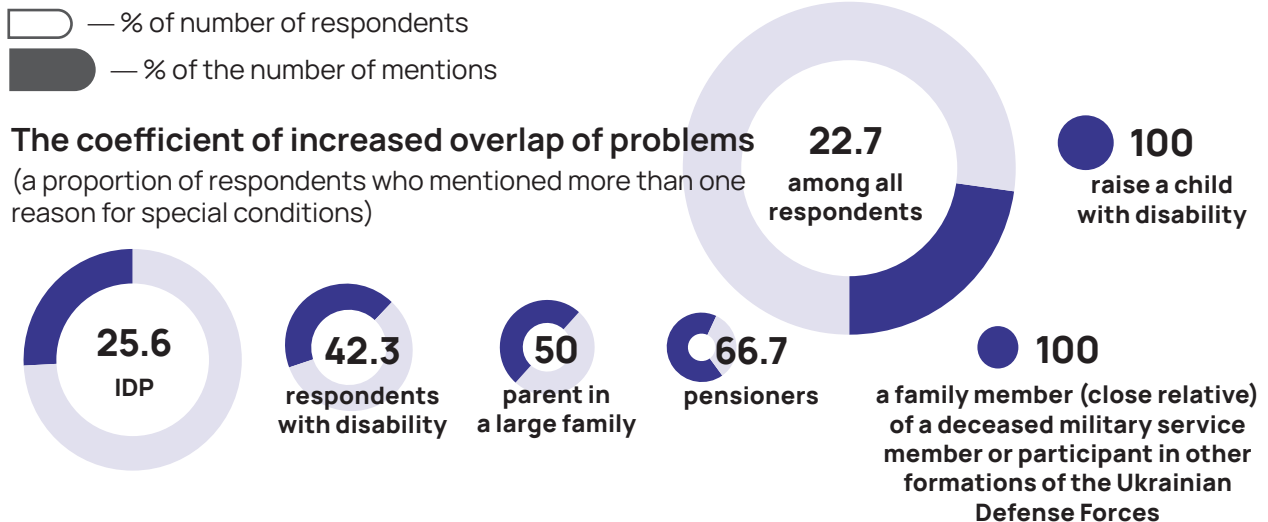
Table 2.1

Quantitative characteristics of the prevalence of factors of social vulnerability of community members



○ — % of number of respondents
 ● — % of the number of mentions

The coefficient of increased overlap of problems
 (a proportion of respondents who mentioned more than one reason for special conditions)



Thus, the percentage of socially vulnerable respondents who face additional restrictions and difficulties in the process of adaptation to the wartime conditions is relatively high: 70.5% of the respondents indicated at least one reason causing additional problems and restrictions for their household.

The most common reason for the special social status among the respondents is a forced change of residence (the status of an internally displaced person), mentioned by 52.6% of the respondents (57.5% of women and 36.1% of men).

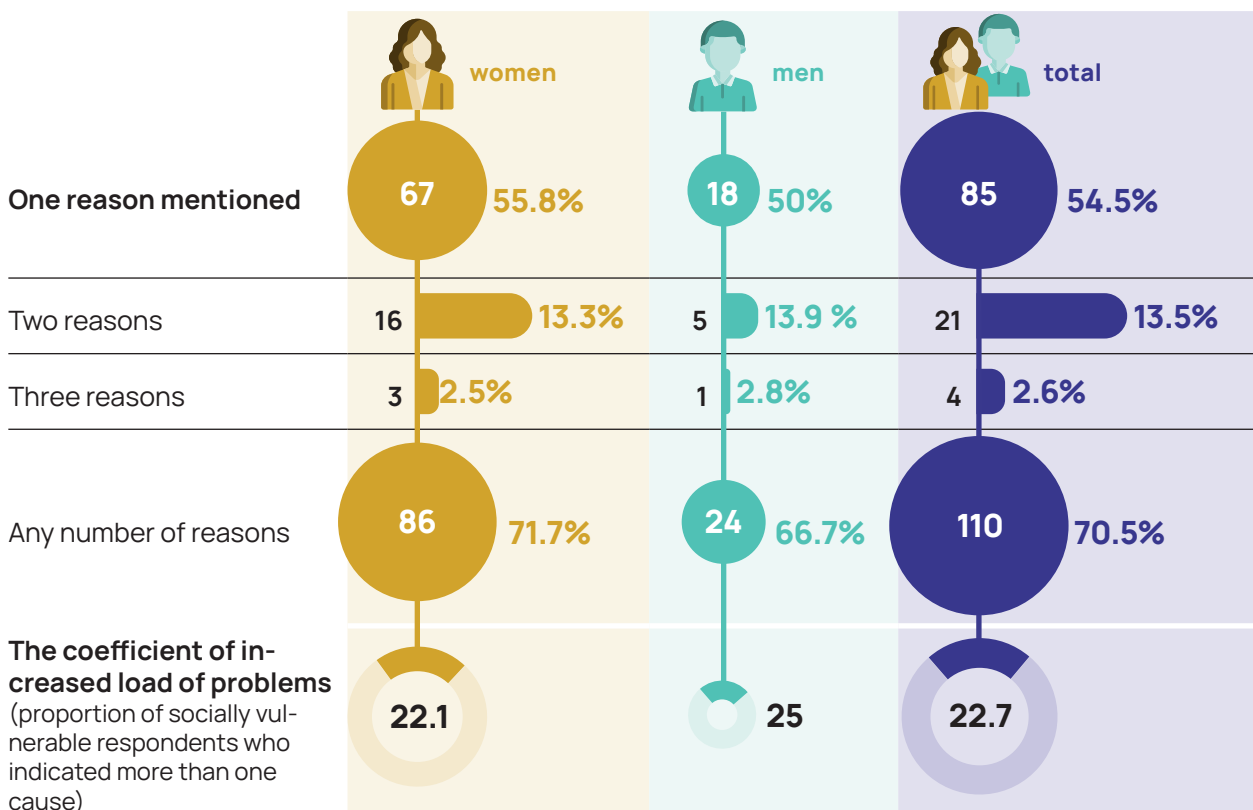
The given data show that the results of the analysis of the sample data will be especially useful for the communities where people face special problems and disadvantages - the situation is quite common in both small settlements attempting to integrate IDPs as well as in localities with mass migration or those which play the role of a "transit hub" where an initial adaptation of IDPs and search for the opportunities of participating in social life take place after the loss of the previous place of residence, or acquire the status of an abandoned settlement, a significant part of the population of which has moved away.

The situation when most community members are people with limited opportunities to participate in social life creates both problems and opportunities for the formation and realization of the potential of social cohesion. On the one hand, the complexity of problems faced by the community members requires the formation of coordination links and the exchange of information, which will further help to realize common interests and the capabilities of extracting benefits from coordinated activities. Otherwise, excessive social load on the most functionally capable members of the community creates high competition between the goals of social support and reinforces the need to search for support resources beyond the communities reducing the importance of their own resources and capabilities (including benefits from cohesion) to achieve the desired level of consumer satisfaction by the representatives of socially vulnerable groups.

In addition, it is important to identify and prioritize meeting the needs of those representatives of socially vulnerable groups who face several problems at the same time. The characteristics of the prevalence of such phenomenon among respondents are given in Table 2.2.

Table 2.2

The division of respondents according to the number of problems and restrictions their households face



70.5% of all the respondents (71.7% among women and 66.7% among men) indicated the existence of at least one problem (restriction of opportunities) faced by their households. 13.5% of respondents reported two problems (13.3% among women and 13.9% among men). At the same time, three reasons for special conditions or restrictions of opportunities are observed among 2.6% of respondents. Accordingly, it is obvious that those households that are faced with several reasons for restriction of their own ability to provide the desired level of meeting needs at the same time and are, therefore, dependent on social programs and community support measures should acquire priority as recipients of aid. This requires special amendments to the indicators of equalization of conditions and opportunities used to evaluate the achievements of community cohesion. After all, traditional indicators of aid coverage may not take into account, firstly, the priority importance of providing primary aid to families with several factors of special needs and restrictions, and secondly, the higher resource intensity of providing such aid. Accordingly, the strengthening of cohesion, which implies a high awareness of the community about the real needs of its members, about the importance of the aid provided for preserving the health, vitality and social activity of certain households, can be a guarantee of justified targeting of aid, the predominance of informal procedures for the distribution of resources in favour of those households that need them the most.

Another group of challenges for the formation and realization of the potential of social cohesion of communities is the involvement of its members in economic activity (Table 2.3 and Table 2.4).

11.5% of the respondents do not have their own source of income (10.8% among women and 13.9% among men). Another 25.6% of the respondents receive income only in the form of pensions (other social transfers). 27.5% of women and 19.4% of men. 38.5% of all the recipients of social transfers, but 14.2% of women and 8.3% of men combine income in the form of social transfers with income in the form of salary or business profit.

Accordingly, about 38% of women and 33% of men are most dependent on social support from the central or local government and the community. 37.1% of the total number of respondents who are critically dependent on aid is an excessive load on the community, which is also combined with a traditionally high demographic load on the economically active population in Ukraine (even the low incomes of economically active members of the community are subject to traditionally high tax pressure for ensuring the fulfillment of budget obligations).

Similar indicators regarding representatives of the local population of the community and IDPs are given in Table 2.4.

The data in Table 2.4 indicate significant differences in the level of self-sufficiency and in the structure of such income by source between respondents with IDP status and representatives of the permanent population of the community. In particular, 15.9% of the respondents with IDP status and 6.8% of the respondents from among the permanent population of the community do not have their own source of income.

In addition, more than half of IDPs (51.2%) have income in the form of pension or other social transfers, while 31.7% of the respondents with IDP status have only the above income, that is, they do not receive either salary or business income. Among the permanent population of communities, 25.7% of the respondents receive income in the form of pensions or other social transfers, and 18.9% have only such income (they do not have income from either employment or entrepreneurship). Accordingly, the share of respondents who do not have their own income among IDPs is more than twice as high as among the permanent population of communities, and the share of respondents who receive only social transfers (without income from economic activity) is almost twice as high as among the permanent population of the community. Opportunities for employment or organizing own business for IDPs largely depend on full integration into the life of the community.

Table 2.3

Distribution of respondents by the source and the availability of income

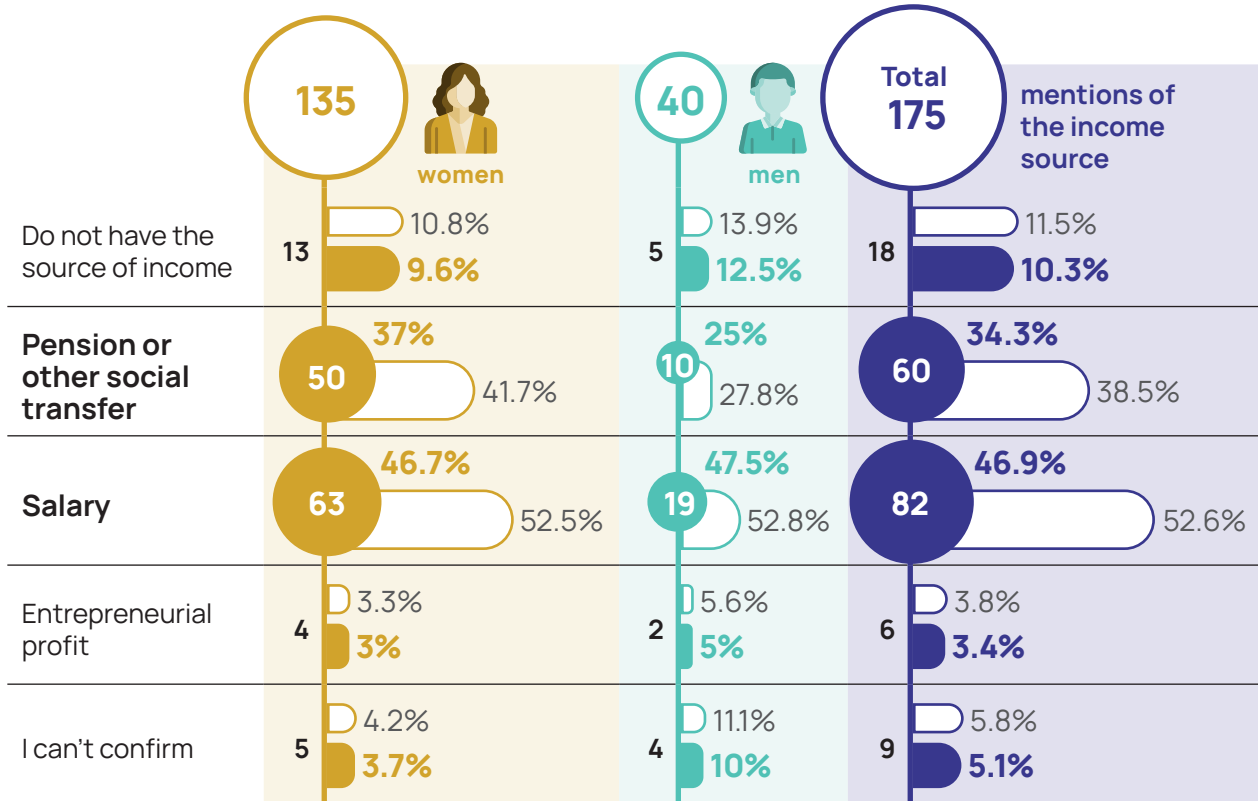
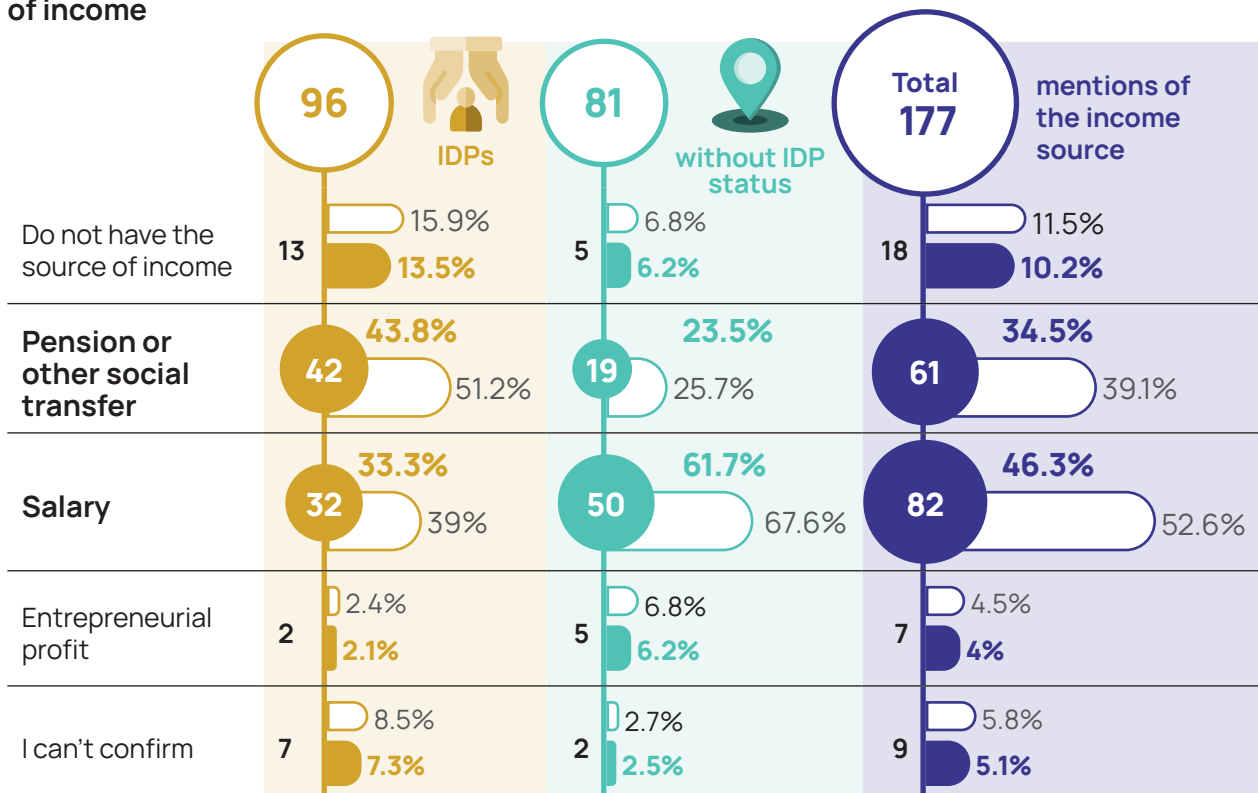


Table 2.4

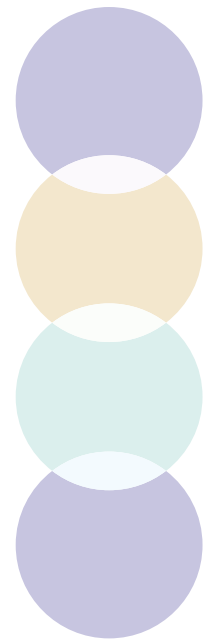
Division of the answers of IDPs and local population according to availability and sources of income



Meanwhile, an inverse positive connection can also be detected: the increase in involvement of IDPs in the local employment sector fosters their full integration into the self-sufficiency processes of the community. The gaps recorded in the sample between the level of self-sufficiency of IDPs and the permanent population of communities are quite convincing. At the same time, the largest gap is in the number of respondents who earn income from entrepreneurship (2.4% of respondents with IDP status and almost three times larger share, 6.8%, among representatives of the permanent population). Thus, support to self-employment of IDPs can be considered a priority direction of integration into the employment sector of the community. Hired labour in conditions of permanent shortage of work places in communities may result in a less positive impact on social cohesion due to competition: the most important work places are occupied by representatives of IDPs, not by local residents. Therefore, the benefits for IDPs are achieved at the cost of reducing opportunities available to the local residents, whereas the promotion of entrepreneurship for IDPs provides for the increase in the number of jobs available to the local residents. Hence, supporting entrepreneurial initiatives of IDPs contributes to increasing involvement of IDPs in community employment creating positive effects on the employment opportunities of the local population without intensifying competition for available work places.

The critically low level of modal economic capacity of community members forms a determining background for the formation of social cohesion. The number of forms of capacity building and realizing the potential of social cohesion, which is organic for communities with equal economic opportunities, appears to be unattainable for many communities in Ukraine, whose members operate with such limited economic opportunities that any perturbation (regarding prices, income, structure of consumer expenditures, mobility, etc.) poses direct threats to the level of satisfaction of their basic needs. Such circumstances are favourable for the forms of social cohesion which involve collective efforts to obtain the most effective use of the resources of not only community members, but also businesses, humanitarian organizations, organizations created outside communities, institutions of social infrastructure. The latter can act as centres, a primary base, a source of an initial supply of resources that will form the basis for further development and reproduction by the forces of a socially cohesive community. Consequently, the following chapter of the paper is devoted to the specification of these opportunities and practices common within communities for using available objects of social infrastructure and business facilities as centres of social cohesion, reducing inequality and deprivation, and improving living conditions of socially vulnerable community members.

3. POSSIBLE MEANS OF EXPANDING AND INCREASING SOCIAL COHESION OF COMMUNITIES



The first hypothesis concerns the possibility of interaction between the community and business structures which have important ties with their representatives as employees and leading customers. Three characteristics are used to detect the existence of such a significant connection: “if the enterprise where a respondent is employed is located near his place of residence”; “if community members are leading consumers of its products (services)” and “if community members are the majority (the main group) among the company’s employees.” The characteristics of the potential of using business facilities as centres of strengthening and expanding social cohesion of the community are given in Table 3.1.

A complete set of all three prerequisites for the formation of a centre of social cohesion of the community on the basis of the enterprise which provides employment for many members of the community, are mentioned by 13.5% of respondents.

It means that not all administrative units have the opportunity of creating social cohesion centres on the basis of enterprises which are located in the settlements of communities and which employ a significant part of the economically active population of communities. However, it is important to what extent the potential provided by “rootedness” of the enterprise in the particular community is used.

The detailed characteristics of the use of such potential by administrative units of respondents are summarized in Table 3.2.

In total, 10 respondents mentioned obvious social benefits gained by the community through interaction with the enterprise providing the employment of community members.

Table 3.1

The distribution of respondents' answers regarding the prerequisites for using a business that provides employment as a centre for strengthening the social cohesion of the community

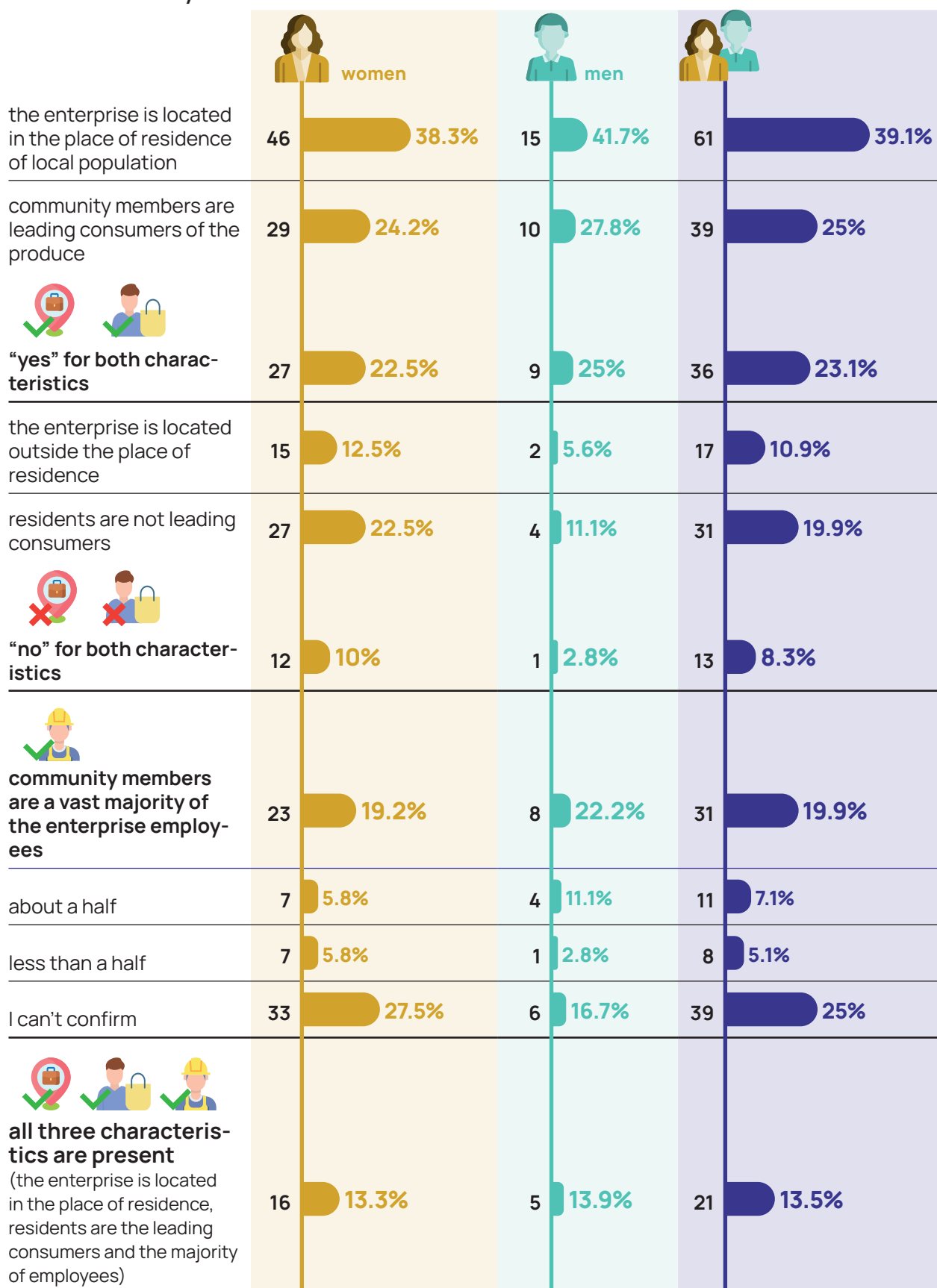
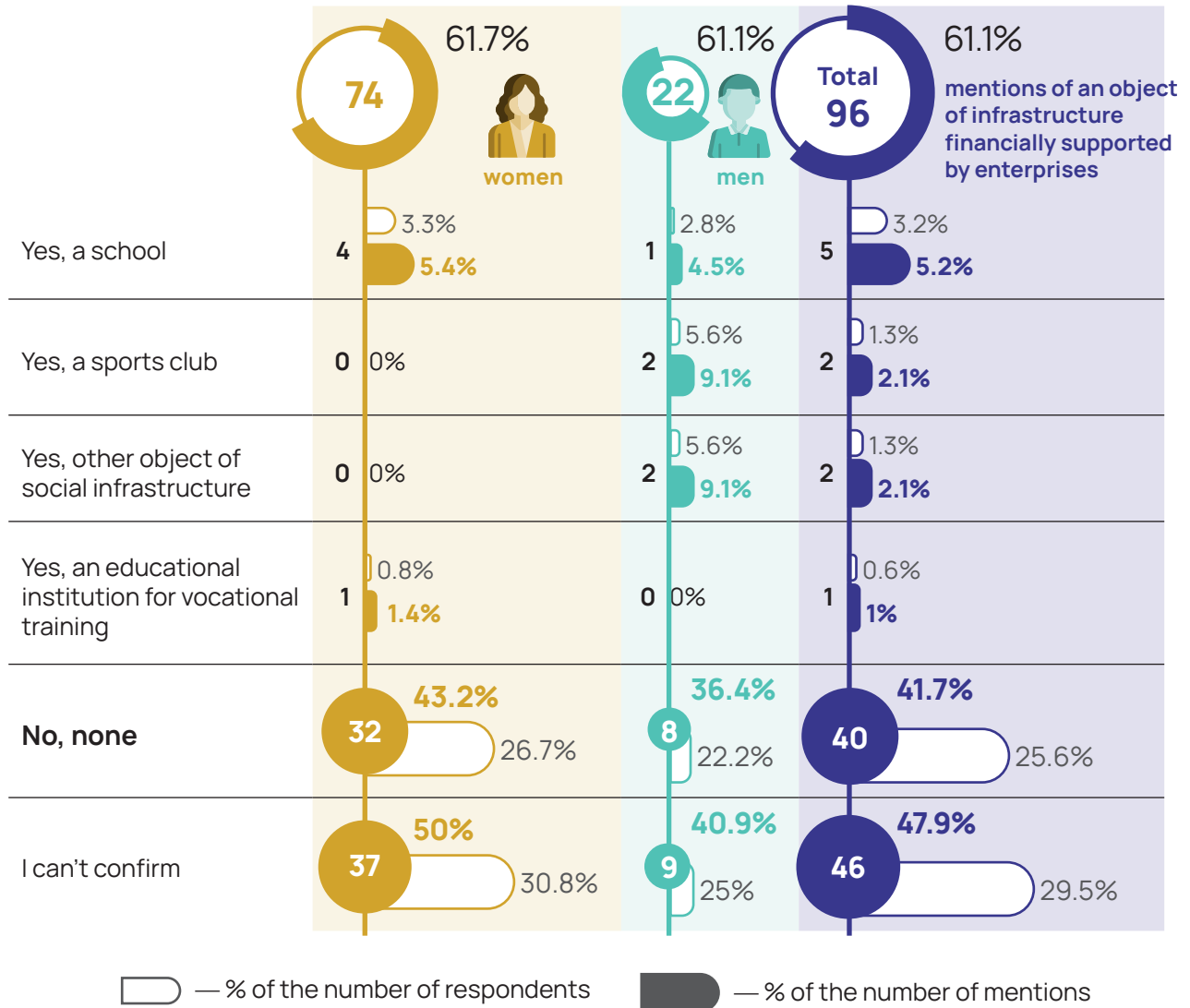


Table 3.2

Division of the respondents' answers to the question "if the enterprise where you are employed supports financially any object of social infrastructure in the community"



So, only 6.4% of the respondents indicated significant potential for interaction with business in order to enhance social cohesion of the community (as given in the Table 6, 13.5% of the respondents indicated the existence of important prerequisites for using business as a centre for enhancing social cohesion of the community). Respectively, the current coefficient of using the potential for increasing social cohesion of communities through interacting with business employing members of the community is approximately 50% – less than half of the respondents who had prerequisites for establishing such contracts with enterprises where they are employed indicated that their enterprises support the social infrastructure of the community. 3.2% of the respondents indicated that a school became the object of such support; 1.3% – sports club; 0.6% – educational institution for vocational training; 1.3% – another object of social infrastructure.

At the same time there are significant deviations between the answers of women and men regarding using the potential of social cohesion of communities through their interactions with business. Although both indicators are rather low, among women 13.3% of the respondents mentioned the existence of all necessary prerequisites of using business as a centre of enhancing social cohesion, and only 4.1% indicated the signs of realization of this potential (the coefficient of realization is approximately 30.0%). While among men the indicator of existence of all necessary prerequisites (13.9%) is even somewhat lower than the indicator of using these benefits by the community (14.0%), respectively, the coefficient of using the potential of social cohesion through the interaction with business is slightly more than “one”, i.e. two respondents who mentioned only two, not three, prerequisites indicated that the enterprises where they are employed support certain objects of social infrastructure.

A significant advantage of the male coefficient of using the potential of enhancing the social cohesion of communities through the interaction with business compared to the female can be considered a sign of gender gap: women are less involved in creating associations and relationships contributing to collective solutions of problems of the community, in particular, establishing relationships aimed at providing the support of social infrastructure objects of the community by business.

In general, according to the data of the calculations, the association of communities and business connected with these communities is estimated as a promising source for improving resource security and social cohesion. Two types of reserves can be distinguished. The first ones are directly related to the realization of the potential already available due to the connections between business and communities (the community members as a large group of employees and as an important group of consumers of goods and services of the enterprise located within the community). According to the estimates of the current research, about 50% of this potential is being currently realized, with an obvious gender gap: all male respondents who indicated the existence of prerequisites for using business for the purpose of enhancing social cohesion of the community also indicated additional functions of business in the support of social infrastructure objects of communities (the coefficient of using the potential is approximately 100%), while among women the same coefficient does not exceed 30%.

The reserves of another type are associated with the high potential for expanded economic activity of community members, including IDPs (the data required for the analysis are given in Table 2.4 in the section 2 in the context of the integration of IDPs).

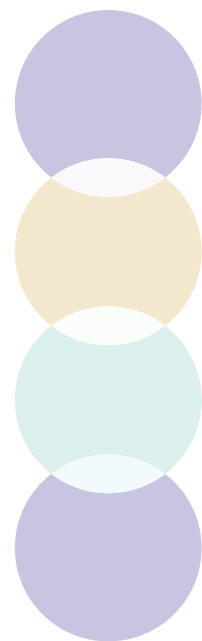


Among the IDPs almost 16% of the respondents do not have their own source of income, while among the representatives of the local residents the corresponding number is 6.8%. The difference indicates the availability of reserves for expanding economic employment in the communities via the increased integration of IDPs.

Moreover, more than half of IDPs (51.2%) have income in the form of pensions or other social transfers, with 31.7% of the respondent with the IDP status having only this income, that is they get neither salary nor entrepreneurial income. Considering the fact that the majority of respondents with IDP status belong to the group of the working-age population group (only 6.1% of the respondents are over 65), total reserves of employment growth for IDPs make up about 40% of this category of community members.

On the basis of the implementation of these two groups of reserves, it is possible to enhance the social cohesion of communities by engaging resources of business rooted in the community due to active involvement of its labour resources.

4. ASSESSMENT OF THE ACHIEVED LEVEL, FACTORS AND PROSPECTS FOR ENHANCING THE COHESION OF COMMUNITIES

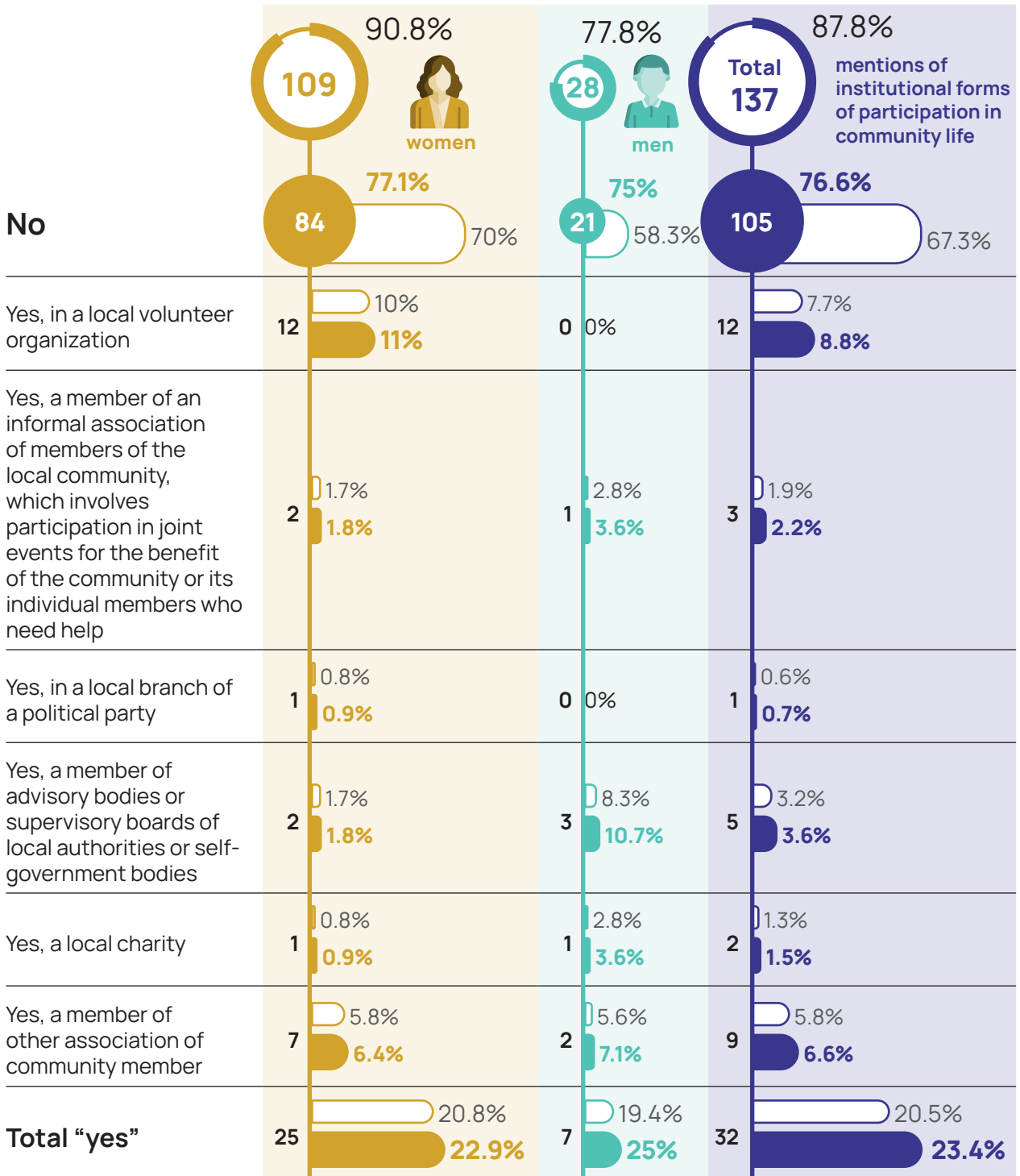


The first characteristics used to assess the strength of connections within the community and the availability of institutions that increase the effectiveness and foster the interaction among the participants of the communities, reducing dependence of collective actions of the community on subjective factors, is membership of community members in non-profit organizations. The corresponding characteristics of the research results are summarized in Tables 4.1 (information is presented in a gender-disaggregated form) and 4.2 (indicators assess the differences between IDPs and the permanent residents of the community).

The overall rate of participation of respondents in all types of non-profit organizations is relatively low - only 20.5% of the respondents indicated their participation in at least one non-profit organization. No gender differences were identified in relation to the overall level of participation in non-profit organizations (20.8% of the respondents indicated participation in at least one organization among women and 19.4% among men). However, the distribution of women and men between different types of organizations differs significantly. Among women prevails the participation in local volunteer organizations (11% of the total number of responses, i.e. almost half of all mentions about the participation in non-profit organizations), while among men prevails the participation in advisory bodies and supervisory boards of local authorities and self-government bodies (10.7% of all the responses, i.e. approximately 40% of all mentions about participation in a non-profit organization). This difference is quite illustrative: among men prevails the participation in public activities related to interaction with local authorities and implementation of the functions of public control over their activity, among women prevails the participation in the volunteer movement. As a result, regardless of the prevalence of a number of women in the sample, men constitute the majority among the respondents involved in the activities of advisory bodies or supervisory boards of the local authorities and self-government bodies, they account for 60 % and, apparently, a proportion of women involved in such activity of community members is a third less.

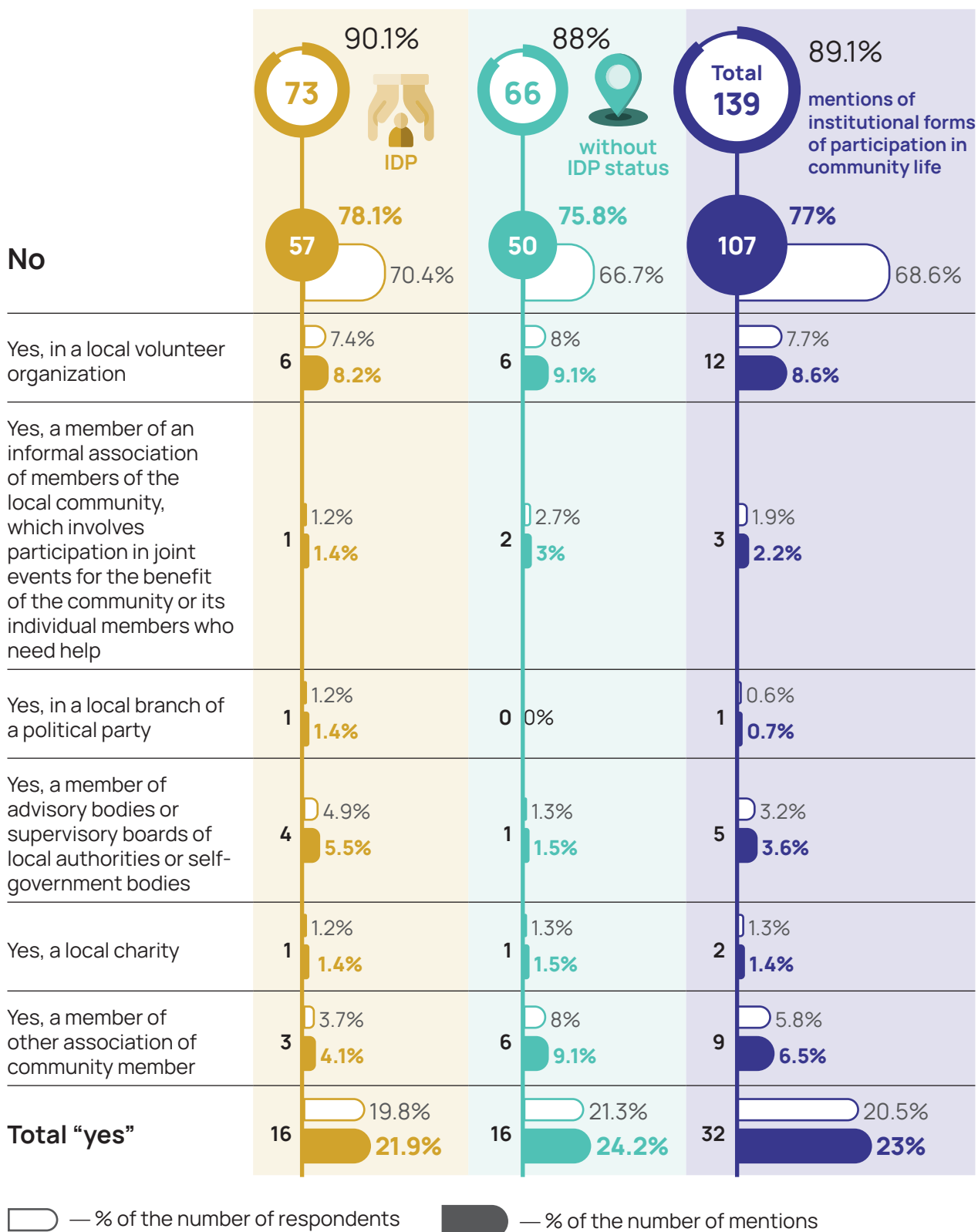
Table 4.1

Gender-disaggregated characteristics of respondents' participation in non-profit organizations



○ — % of the number of respondents ● — % of the number of mentions

Table 4.2

Characteristics of the participation of IDP respondents and the permanent population of the community in non-profit organizations

To some extent, such a gender gap fits into the overall thesis about the less involvement of women in the activities of local authorities, especially in leadership positions. The results of a significant number of researches reveal an obvious inverse relationship between authorities and position in the power hierarchy of certain elective and competitive positions and a share of women who hold the positions of the corresponding level⁸. The given data confirm the thesis that accessibility for women decreases as the rank of the position increases, revealing additional aspects of this tendency: the interaction between authorities and non-profit organizations is provided predominantly by men, which may be interpreted as one of the prerequisites for the reproduction of this tendency in the future.

Regarding the involvement of IDPs in the activities of non-profit organizations, in terms of the general level of participation, as well as in the gender aspect, there is almost complete equality: 19.8% of the respondents with the status of IDPs are involved in the activities of at least one non-profit local organization and 21.3% – among respondents from the permanent population of the community.

There are also no significant differences in the structure of the distribution of responses regarding different non-profit organizations. The leading form of participation in the life of the community is involvement in the activities of a volunteer organization (8.6% of the total number of responses, 9.1% of the number of responses provided by respondents from the permanent population of the community and 8.2% of the number of responses among IDPs). At the same time, participation in advisory bodies or supervisory boards of local authorities or self-government bodies is more common among IDPs (4.9% of respondents indicated this form of participation in the life of the community, among the responses of IDPs this form accounts for 5.5% of the responses, i.e. one quarter of the answers about the participation in all forms of non-profit organizations).

Therefore, the current research did not reveal additional barriers for the integration of IDPs into the host community in terms of involvement in the activities of non-profit organizations – the intensity of the participation of IDPs coincides with similar indicators for the permanent population.

However, the general level of involvement of both the permanent population of the community and IDPs in the activities of non-profit organizations is low compared to the countries where civil society has become an influential element of the political decision-making system⁹.

8 A Manual on Local Politics for Men and Women. Preventing and combatting sexism at the local level in Ukraine. <https://rm.coe.int/preventing-and-combatting-sexism-at-the-local-level-inukraine-ukr-web/16809ee580>

9 2019 Report on equality between women and men in the EU; European Commission: Strategic engagement for gender equality 2016-2019

At the same time, economic restrictions, the lack of a resource base (premises, financing and technical support for communications, legal and methodological support) remain the leading factor of such a low level of participation in non-profit organizations. Among the respondents who do not have their own source of income or receive income only in the form of social transfers, the level of participation in the activities of non-profit organizations does not even reach 15%, and the share of the respondents who do not interact with any community non-profit organizations exceeds two thirds (almost 67%). Accordingly, the level of participation for such respondents is below the average for all participants in the sample by almost 6 percentage points. And compared to those respondents who have factor incomes (for them, the overall level of involvement in the activities of community non-profit organizations is 23.3%) – by 8.5 percentage points. According to respondents who have income from entrepreneurship (in Ukraine, they are expected to be significantly higher than income from hired labour, especially in the conditions of small settlements), the level of involvement in the activities of non-profit organizations is approximately 67%, which is radically higher than the average level of the participation for all respondents and a similar indicator for respondents without their own source of income and with income only in the form of social transfers.

Therefore, the data of the sample confirm the thesis of many studies of the relationship between the dynamics of welfare and public activity of communities¹⁰, that unfavourable economic conditions significantly limit the possibilities of expanding the networks of organizations that will ensure the institutionalization of connections between individuals and groups and contribute to enhancing the social cohesion of the community.

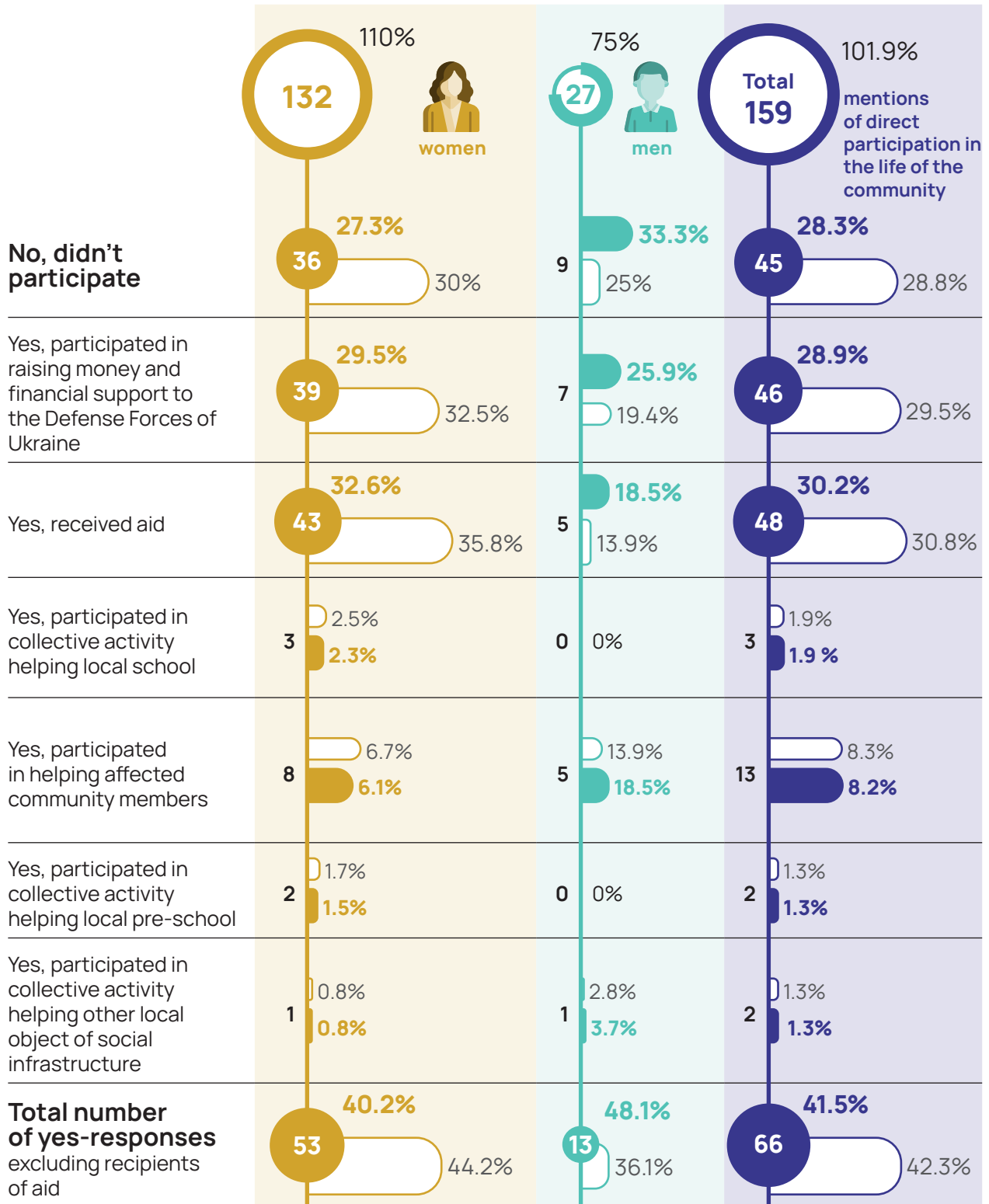
Thus, the expansion of resource support, especially targeted, directly functionally related to the activities of public organizations providing aid to vulnerable members of the community becomes a critically necessary basic condition for enhancing social cohesion. At the same time, it is not about one-time or periodic humanitarian aid that directly satisfies at least the critical needs of those who need it the most, but about improving the resource provision of the internal activities of the community aimed at self-sufficiency, about the elimination of material “barriers to entry” that do not allow to start processes of constant exchange of information about needs and opportunities within the community, promotion of using their own potential to solve urgent needs and improve the well-being of vulnerable community members.

The second used characteristic of social cohesion is the prevalence of personal participation in various types of collective actions, projects and community self-sufficiency measures organized by non-profit organizations. The results of this survey are given in tables 4.3 and 4.4.

10 Nureyev P. M. Development Economics: contribution of Amartya Sena. Sen A. Development as freedom. M.: New publishing house: Liber. Mission, 2004.

Table 4.3

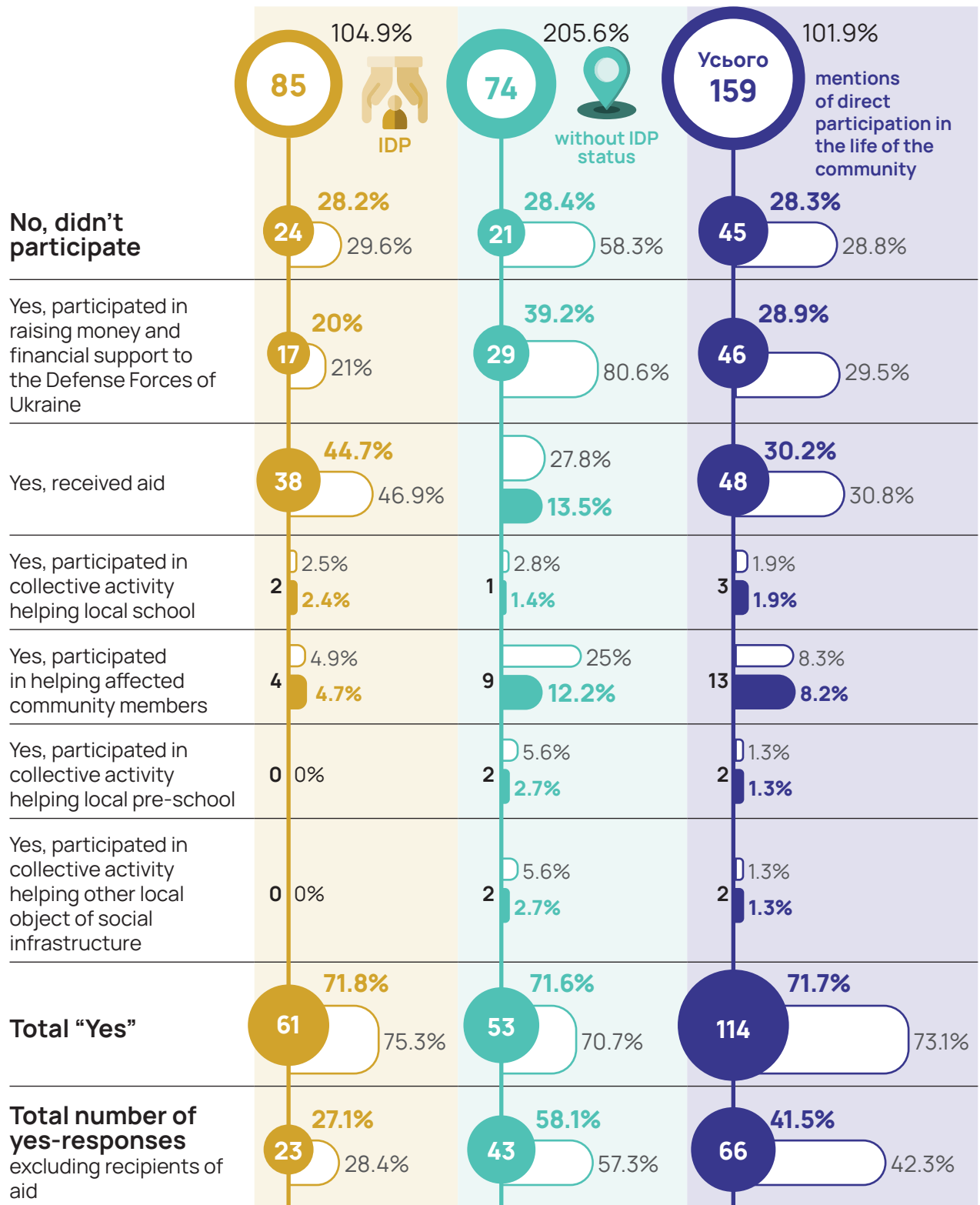
Gender-disaggregated characteristics of respondents' interaction with non-profit organizations via different forms of collective activity in the community



○ — % of the number of respondents ■ — % of the number of mentions

Table 4.4

Characteristics of interaction of IDPs and permanent residents with non-profit organizations via different forms of collective activity in the community



○ — % of the number of respondents

● — % of the number of mentions

The general level of the participation in individual measures for the collective self-sufficiency of the community significantly initiated by non-profit organizations exceeds the level of involvement in institutional forms of collective activity (membership in non-profit organizations). According to all respondents, it reaches 73.1% (Table 12). However, the overwhelming majority of responses relate to receiving aid - in this status, 30.8% of the respondents interacted with non-profit organizations during wartime (35.8% among women, 13.9% among men, 46.9% among IDPs, and 27.8% among permanent population of the community).

Thus, 42.3% of the respondents actively participated in particular activities organized by non-profit organizations aimed at solving social problems of the community; 44.2% of women; 36.1% of men (Table 4.3); 28.4% of IDPs, 57.3% of the permanent residents of the community (Table 4.4).

Differentiation of the overall level of involvement in interaction with non-profit organizations in the process of collective actions of the community directed on solving social problems indicates a significantly lower participation of IDPs in such events (according to this category of respondents, the rate of involvement in providing aid is almost twice lower than the rate of involvement in receiving aid - 28.4% versus 46.9% of respondents), while women are even more active than men (the difference is not statistically significant due to the small sample size - 44.2% versus 36.1%). In this case, women are significantly more likely than men to receive aid: while among men, 13.9% of respondents were recipients of aid, while among women there were 35.8%.

Among the forms of participation in collective activities of the community the most common is the participation in raising monetary or material aid to the Defense Forces of Ukraine. 29.5% of the respondents were involved in this form of collective activities, this form of collective activity accounts for 28.9% of the total number of responses and 69.7% of the responses about active participation (participation in providing, not receiving, aid). This form of participation also prevails among the IDPs - 20.0% of the total number of responses and 73.9% of responses about active participation in collective activities; as well as among the permanent residents of the community (39.2% of the total number of responses and 67.4% of the responses about active participation in collective activities of the community); among women (29.5% of the total number of responses and 73.6% of responses about active participation in collective activities of the community); and among men (25.9% of the total number of reports and 53.9% of the responses about active participation in collective activities of the community).

Considering the fact that the leading organizers of such collective activities as raising aid to the Defense Forces of Ukraine are volunteer organizations, the results confirm the leading role of volunteer organizations in providing organizational support and institutionalization of collective activities of communities.

However, volunteer activity demonstrates comparatively high (and significantly lower among IDPs than among the permanent residents) level of involvement of community exclusively in the issues concerning aid to the Defense Forces of Ukraine.

The level of participation in the issues concerning the support of the social infrastructure of the community is minimal: 1.3% of the respondents provided support to a preschool educational institution (1.7% among women, 0.0% among IDPs); 1.9% of the respondents provided support to the local school (2.5% among women, 2.5% among IDPs); 1.3% of the respondents supported any other object of social infrastructure of the community.

The participation in the issues related to the providing aid to socially vulnerable members of the community is also scarce: 8.3% of the respondents were involved in it during wartime; 4.9% of the IDPs, 25.0% of the permanent residents of the community; 13.9% among men, 6.9% among women.

Therefore, the above data reveal that communities rely on foreign aid rather than accumulate internal resources to satisfy collective needs and support socially vulnerably members.

Meanwhile, the level of the participation of respondents in particular activities (42.3% among all groups of respondents regarding all forms of active participation in activities initiated by non-profit organizations in the support of social infrastructure objects and affected community members) is significantly higher than the level of institutional participation (membership in non-government organizations) – a total of 20.5% for all groups of respondents. This indicates the potential for systematization and ordering of the forms of activity and connections that have already spontaneously formed in the community, due to increasing the value of the resource and methodological potential of the organizations providing institutional registration of mutual support and social solidarity networks that have already been formed in communities.

This hypothesis is confirmed by the data concerning independent providing of material aid for the integration of IDPs in the community (Table 4.5 and 4.6).

Table 4.5

Gender-disaggregated characteristics of the activity of personal participation of respondents in providing non-formal monetary aid to IDPs

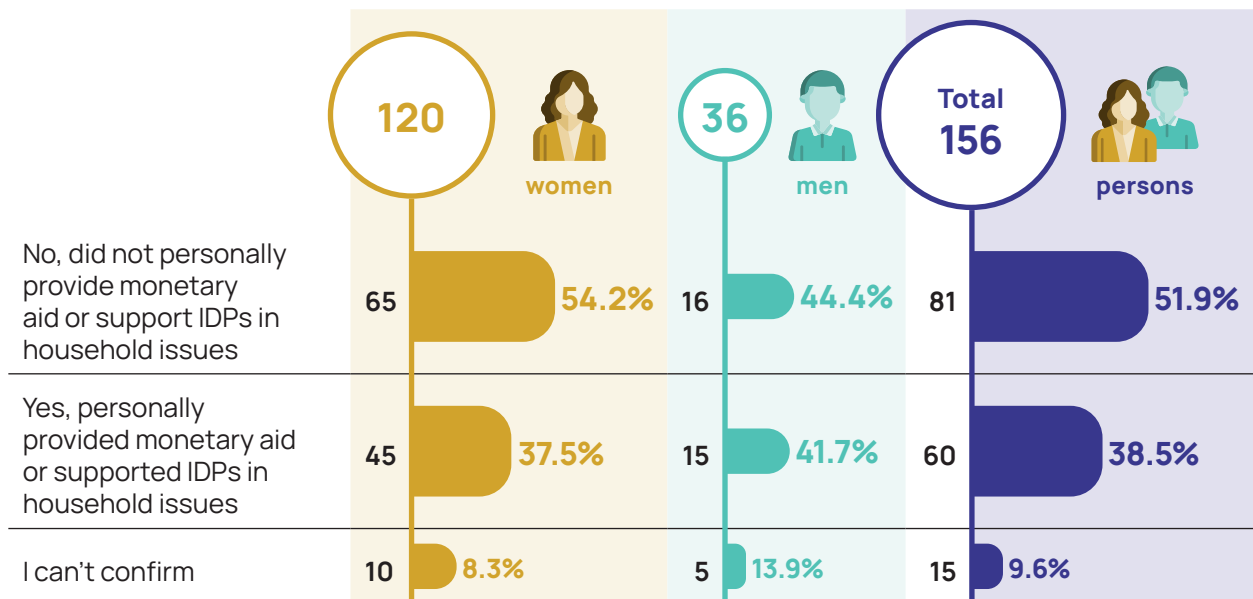


Table 4.6

Gender-disaggregated characteristics of the activity of personal participation of respondents from among IDPs and permanent residents in providing non-formal monetary aid to IDPs

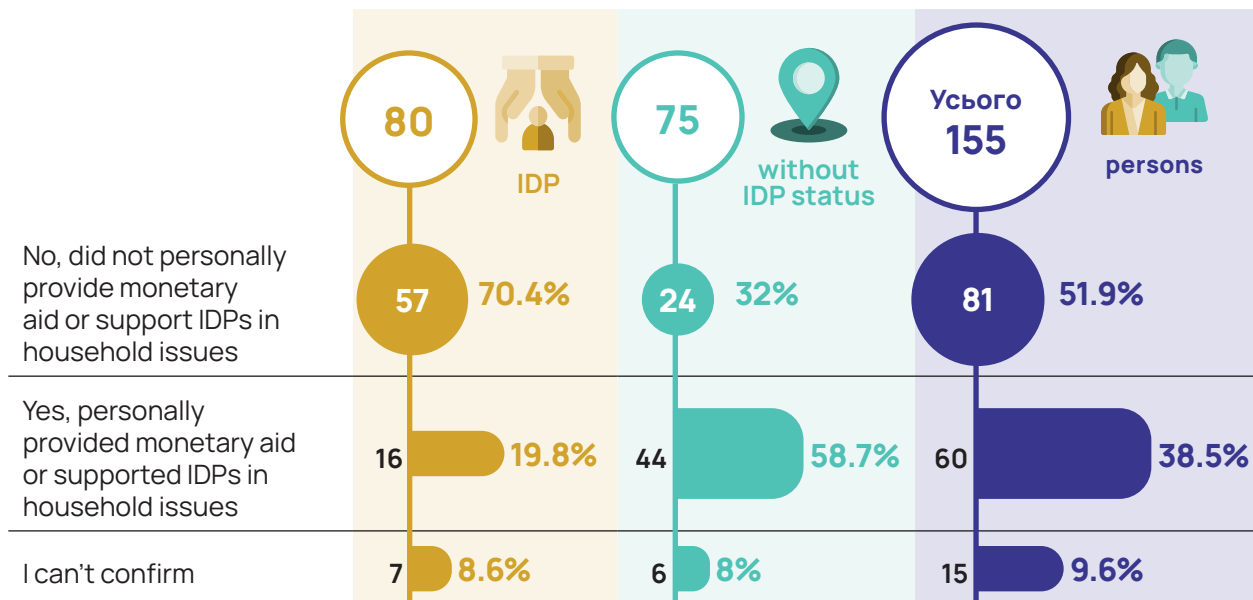


Table 4.7

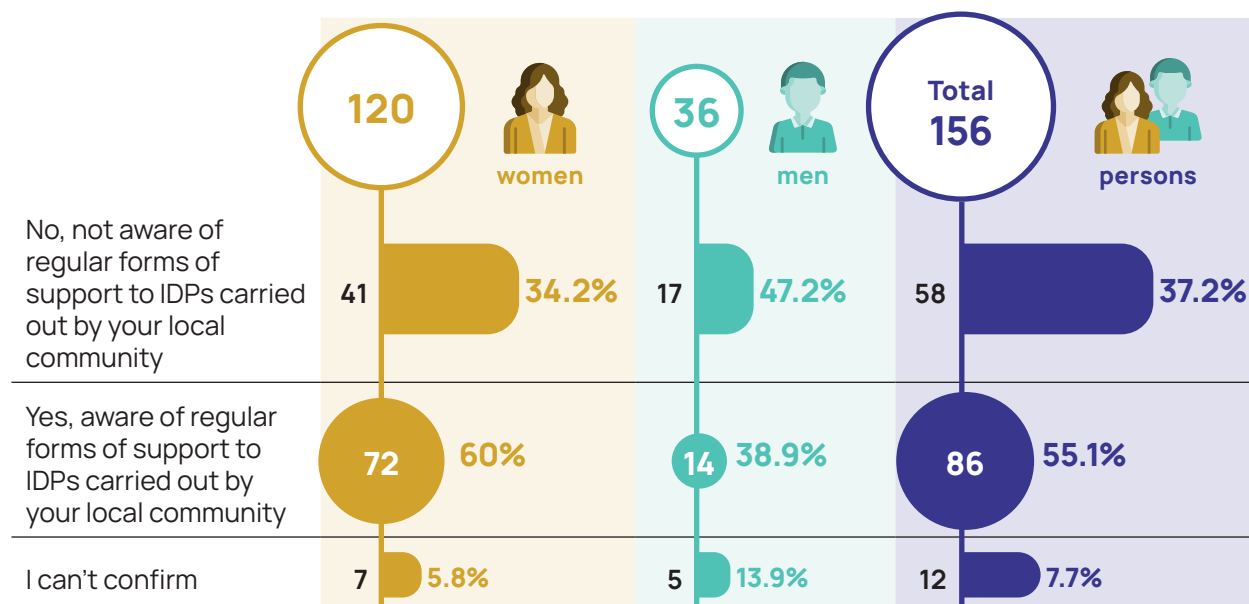
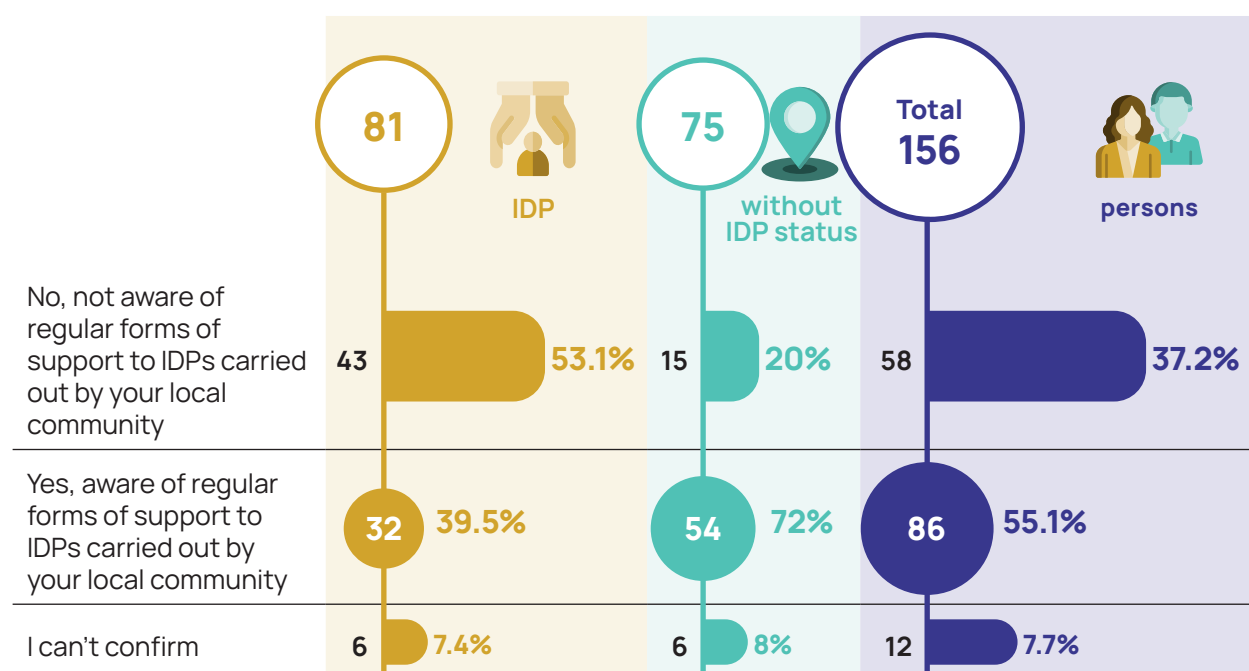
Gender-disaggregated characteristics of respondents' awareness of regular forms of IDPs support they can join in

Table 4.8

Gender-disaggregated characteristics of awareness of the respondents with IDP status of regular forms of IDPs support they can join in

Among all the respondents the level of involvement in providing monetary aid for IDPs is approximately 40% (41.7% among men and 37.5% among women). This indicator radically exceeds the overall level of participation in all types of activities initiated by non-profit organizations to support social infrastructure facilities and affected communities (9.6% among all groups of respondents). Meanwhile, the level of participation of the respondents from among the permanent population of communities in providing such material support is even higher – 58.7% (Table 4.6).

It is interesting that the level of “self-help” of IDPs is significantly lower than among the permanent population of the communities – only 19.8%. This gap between the capacity of mutual assistance among IDPs and the capacity of support to IDPs by the permanent population of the communities indicates the positive dynamics of integration. As IDPs are not limited to their own community, they can rely on assistance and interaction with representatives of the permanent population of the communities, which is the main guarantee and the keystone of integration processes.

The dynamics of informal interaction and joint response to challenges to the welfare of the community precedes the development of institutional forms of collective activity in the community. This is confirmed by the fact that informing respondents about regular innovative events and forms of assistance to IDPs initiated by non-profit organizations (Tables 4.7 and 4.8) does not have a significant impact on the involvement of respondents in providing material aid for IDPs (Table 4.5 and 4.6).

The data in the tables 4.7 and 4.8 indicate that nearly 40% of the respondents are not informed about regular forms of support for IDPs they could join in. As a result of our additional analysis of the participation of permanent residents in providing material aid for IDPs, we have revealed that the level of involvement in the material support of IDPs practically does not depend on the awareness of the available permanent programs: among both the respondents informed about relevant initiatives initiated by non-profit organizations and those who are not informed about them, the level of the participation in this material support of IDPs is practically the same – about 58%.

As a result of insufficient resource and methodological support of the activities of non-profit organizations which may increase efficiency of existing potential for self-sustainment of the community and improve targeted and systemic aid, subjective perception by respondents of the achieved level of social cohesion of the community is rather controversial (Table 4.9 and 4.10).

To the question “Do you feel you can rely on the support of the community whenever you need it?” the distribution of responses is quite even – there is no single option chosen by the majority of respondents. The largest portion of respondents answered “Yes, but I will only supported by close friends and acquaintances” – 26.9%, 33.3% of men and 25.0% of women; 27.2% of the IDPs and 26.7% of the permanent residents of communities. Taking into account the fact that respondents did not use the opportunity to choose more than one option of the answer, the shares calculated based on a total number of responses equals to the shares based on the number of respondents.

Another response popular with the respondents: “I doubt if they will support me” – 22.4%, 11.1% among men, 25.8% among women, 30.9% among IDPs and 13.9% among the permanent residents of the community. Less confidence in the support of women and IDPs is illustrative – identified differences “women / men” and “IDPs / permanent residents” are statistically significant at $p = 0.05$ even for little overall size of the sample ($n=156$).

The third popular answer is “No, I don’t feel people will support me”, given by 16.0% of respondents.

Two positive suggested options of responses “Yes, if it is necessary to solve a common problem” and “Yes, if it is necessary to force local authorities to make important decisions” were chosen by only a small number of respondents: 6.4% and 1.9% respectively. The option “Yes, if there is a tragedy in the family” was chosen by 11.5% of respondents.

Table 4.9

Gender-disaggregated characteristics of the respondents' perception of the social cohesion of the community

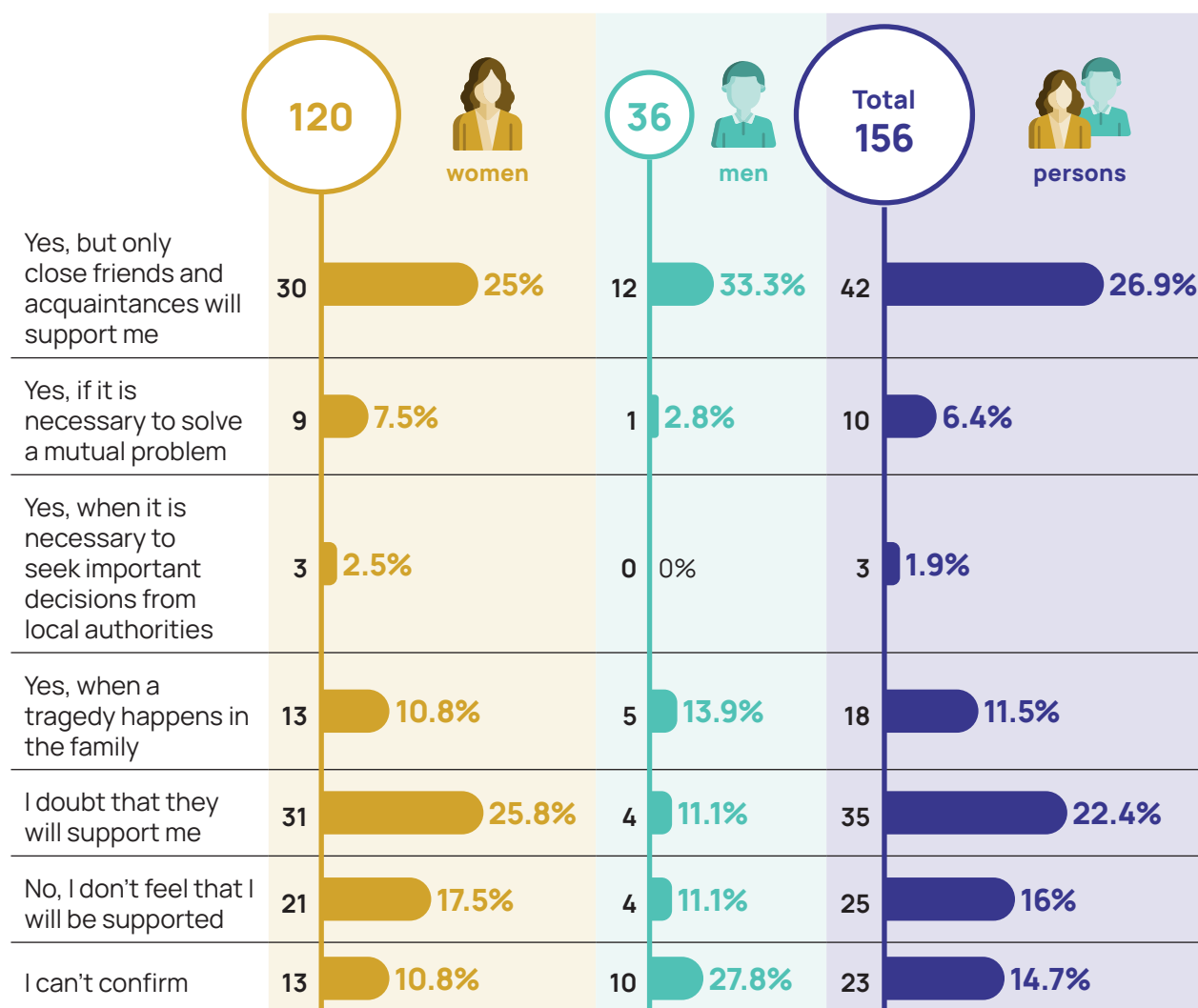
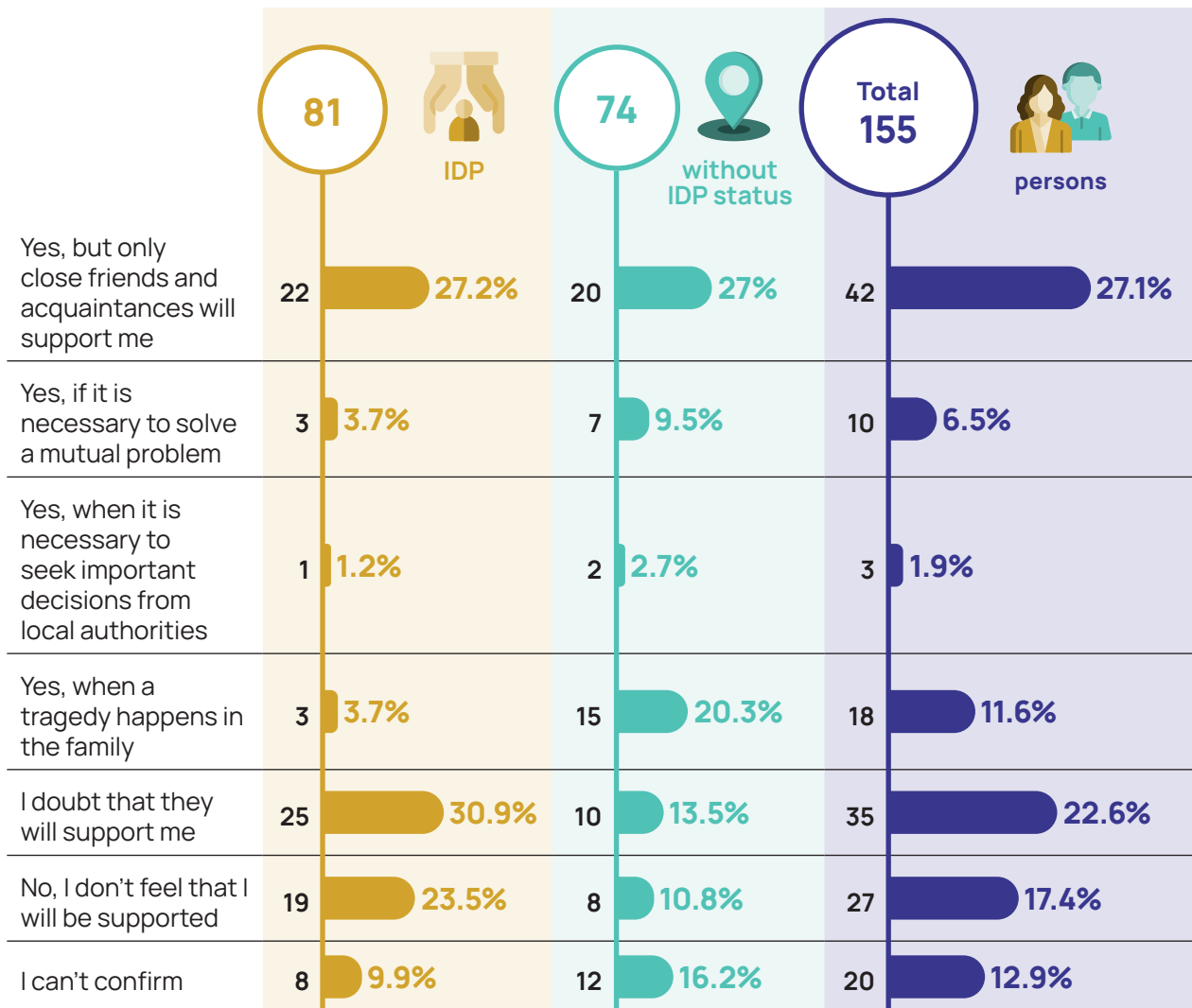


Table 4.10

Gender-disaggregated characteristics of perception of the social cohesion of the community by respondents with IDP status and by permanent residents



So, in total, less than 20% of the respondents expressed confidence that in case of solving the current problem or compensating the consequences of a negative event they can rely on the support of the community. Another 26.9% count on the support of only a close circle of communication (“Yes, but only close friends and acquaintances will support me”), at the same time, men are more likely to rely on a close circle of acquaintances (33.3% versus 25.0% among women) .

CONCLUSIONS

- 1) Strengthening social cohesion becomes critical for ensuring the resilience of communities that integrate a significant, compared to the size of the permanent population, group of individuals who face specific problems and restrictions. This situation is quite common both in small settlements trying to integrate IDPs and in settlements that face mass migration or act as a “transit hub” where those who have lost the previous place of residence go through initial adaptation and seek for the opportunities to participate in public life, or acquire the status of “abandoned settlement”, a significant part of the population of which has left.

The above situation creates both problems and opportunities for the formation and realization of the potential of social cohesion. On the one hand, mutual problems faced by community members contribute to the formation of coordination communications and exchange of information, which will help recognize common interests and determine the opportunity of extracting benefits from coordinated activities. On the other hand, excessive “social load” on the most functionally capable members of the community creates high competition between the goals of social support and increases the need to find resources of support outside the community, reducing the significance of their own resources and opportunities (in particular, benefits from cohesion) to achieve the desired level of satisfaction of the needs of the representatives of socially vulnerable groups.

- 2) The critically low level of modal economic capacity of the community members forms the determining background for creating social cohesion. A number of forms of strengthening and realizing the potential of social cohesion common for communities that have relatively higher economic opportunities appear to be unattainable for many communities in Ukraine whose members operate with such limited economic opportunities that any disturbances (regarding prices, incomes, the structure of consumer expenditure or time distribution, spatial mobility, etc.) create direct threats to the level of satisfaction of basic needs. In such conditions, those forms of social cohesion that involve collective efforts to attract and most effectively use the resources of not only community members, but also businesses, humanitarian organizations created outside the communities

and social infrastructure institutions are gaining importance. The latter can act as a centre, a primary base, a source of an initial supply of resources that will form the basis for further development and reproduction by the forces of a socially cohesive community.

- 3) The current level of using the potential for enhancing social cohesion of the communities due to interaction with business which provides employment for community members is approximately 50%. Accordingly, connections between community and business related to these communities are regarded as a promising source of improving resource provision and strengthening social cohesion.

Two types of such reserves can be distinguished. The first ones are directly related to the realization of the potential that is already available due to the already existing connections between business and communities (members of the community as a large group of employees and as an important group of consumers of the products (services) of the enterprise located within the community). Our research estimates that about 50% of this potential is currently being realized, with a compelling gender gap: opportunities associated with male employment in community-based businesses are used more than similar opportunities associated with female employment. The reserves of the second type are associated with the use of a high potential for expanding the economic activity of the community participants, in particular IDPs (now less than 50% of the available potential is used). On the basis of the implementation of these two groups of reserves, the social cohesion of communities can be strengthened with the involvement of business resources, which will be rooted in the community through active involvement of its labour resources.

- 4) The results of processing data of the conducted sample survey confirmed the thesis that accessibility for women decreases as the rank of the position increases, revealing additional aspects of this tendency: the interaction of the authorities with non-profit organizations is provided mainly by men, which can be interpreted as one of the prerequisites for the reproduction of the tendency of less access for women to the implementation of powers in the near future.

At the same time, our research did not reveal additional barriers for the integration of IDPs into the host community in terms of involvement in the activities of non-profit organizations - the intensity of the participation of IDPs coincides with similar indicators for the permanent population.

However, the general level of involvement of both the permanent population of the community and IDPs in the activities of non-profit organizations is low compared to the countries where civil society has become an influential element of the political decision-making system. Taking into account the lagging in the rate of reduction of gender gaps from the dynamics of the integration of IDPs into the host communities revealed in the research, relevant forms of response of local self-government bodies and civil society institutions are suggested (item 3 of the recommendations).

- 5) In the process of processing the results of the sample survey, we revealed empirical signs of the prevalence of the role of communities and, accordingly, non-profit organizations operating in them as recipients of foreign aid compared to the role of accumulation of internal resources to meet collective needs and support the socially vulnerable members.

At the same time, the level of involvement of the permanent population of the communities in informal support of the vulnerable members, in particular IDPs, is much higher than the level of institutional participation (involvement in membership in non-profit organizations). This indicates the existence of the potential for systematization and streamline of those forms of activities and connections that have already been spontaneously formed in the community, due to the strengthening of the resource and methodological potential of organizations that will provide institutional design to the relations of mutual assistance and social solidarity that are already being formed in the communities.

So, as a result of the research, empirical confirmation of an important tendency was obtained: the dynamics of informal interaction and joint response to the challenges to welfare of the community and its individual affected members are ahead of the development of institutional forms of collective activities in communities.

- 6) The level of “self-help” of IDPs is significantly lower than the level of involvement in providing informal (including material) aid for the integration of new members of the community from the permanent population of communities. This lagging behind the prevalence of mutual aid among IDPs compared to the prevalence of participation of the permanent population of communities in providing support to IDPs indicates the positive dynamics of integration. After all, IDPs are not limited to their community, they can count on help and interaction with representatives of the permanent population of the communities to a greater extent than on connections and mechanisms of mutual assistance formed within the informal community of IDPs. Actually, this trait is the guarantee and cornerstone of integration processes.

7) Currently, the vast majority of the community members do not have experience of interaction with civil society institutions, developed procedures and principles of interaction with other community participants which would allow them to feel confident in the reliable representation of their interests in interaction with local or state authorities and the benefits of participation for them in the collective actions of the community. At the same time, confidence in the ability of the community to take effective collective action increases in cases when urgent assistance is vital and in relation to the support from representatives of a narrow circle of "close friends and acquaintances", which indicates the existence of an important potential for developing the capacity of the community to take effective collective action due to the strengthening of resource and methodological provision of civil society organizations that create institutional support for such actions.

RECOMMENDATIONS

- 1) The development of self-employment and entrepreneurship should be interpreted by local authorities and organizations that formulate needs and distribute donor aid as a priority direction for the integration of IDPs into the employment of the community. This is due to the fact that hired labour in the conditions of chronic shortage of jobs in the communities may have a less positive impact on social cohesion due to the aspect of competition: certain desirable jobs are occupied by representatives of IDPs, not local residents, accordingly, the gain of IDPs is obtained at the price of reducing the opportunities available for the local population. At the same time, the development of IDP entrepreneurship, vice versa, implies an increase in the number of jobs available to the local population, therefore, supporting the entrepreneurial initiatives of IDPs will allow improving the level of involvement of IDPs in the employment of the community, creating positive effects for the employment opportunities of the local population, and not increasing competition for existing work places.
- 2) Local self-government bodies should take into account the degree of realization of the potential for improving the resource provision of the social infrastructure of the community and social security of victims of Russia's military aggression against Ukraine, due to the organization of interaction in the triangle "local self-government bodies – business – non-profit organizations (civil society institutions) of the population communities". For this, evaluate the potential of mutually beneficial involvement of business in supporting social infrastructure objects and the extent of its use via the activities of non-profit organizations of the community.
- 3) Local self-government bodies and the management of companies that interact with communities on issues of support for social infrastructure objects and victims of Russia's military aggression against Ukraine are recommended to promote the strengthening of the role of women in such interaction by fostering their representation in non-profit organizations of the community and providing for procedures for meeting needs of women in the process of planning and organizing support programs for the community from interested business structures.

