

## APPENDIX P PULL STUDY MARKERS, DATASETS, PROTOCOL SCHEMATIC

The PULL STUDY (see results in Chapter 28) was designed to assess the effect of posterior leaflet pressure on anterior leaflet edge geometry in the closed valve. Figure P1 shows the marker array and coordinate system used in this study.

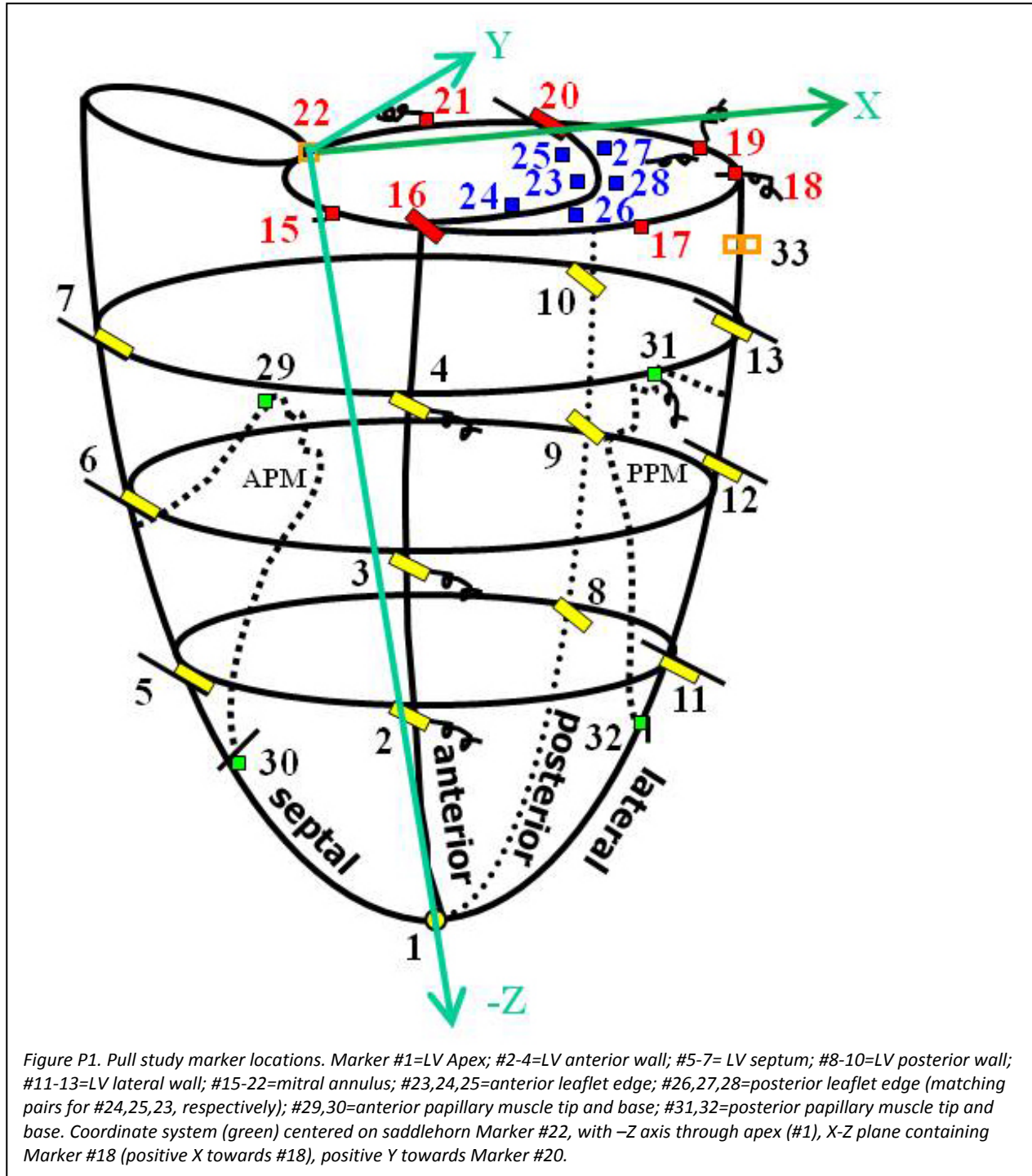


Table P1 shows the datasets associated with the CONTROL and PULL runs for the three hearts analyzed in Chapter 28.

TABLE P1	CONTROL	PULL
	pul08r23pre.1E	pul08r24pull.1E
	pul13r01pre-2frames.1E	pul13r05pull.1E
	pul14r01pre.1E	pul14r02pull-2frames.1E

Figure P2 schematically illustrates the PULL protocol.

