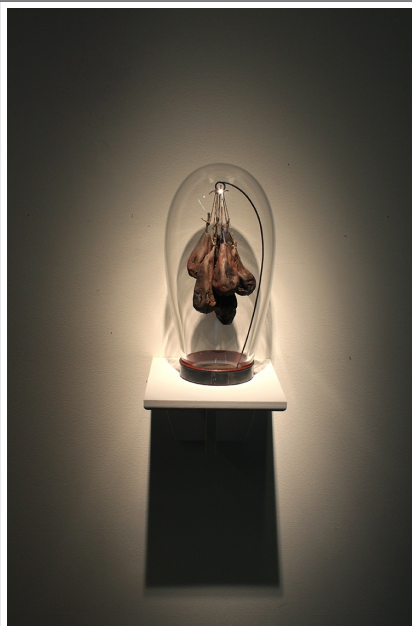




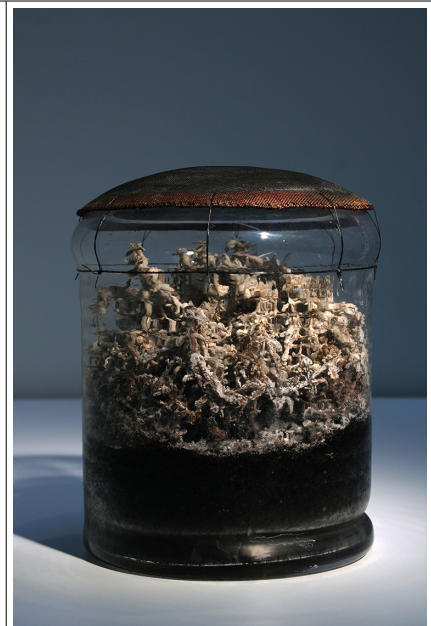
Memories of a parallel future, exhibition space at Konstfack spring exhibition 2014



Canned cartridge shells



Enclosed rusty pears



Salted thyme in glass can



Bundle of rations



Clad cans

Pictures of the practical work,
as supplement to the thesis
paper "Memories from a
parallel future". Paper and work
made by Tilda Dalunde 2013-
14.

