



<http://www.diva-portal.org>

This is the published version of a paper published in *The Lichenologist*.

Citation for the original published paper (version of record):

Kosuthova, A., Fernández-Brime, S., Westberg, M., Wedin, M. (2016)  
Collolechia revisited and a re-assessment of ascus characteristics in Placynthiaceae  
(Peltigerales, Ascomycota).  
*The Lichenologist*, 48: 3-13  
<http://dx.doi.org/doi.org/10.1017/S0024282915000432>

Access to the published version may require subscription.

N.B. When citing this work, cite the original published paper.

Permanent link to this version:

<http://urn.kb.se/resolve?urn=urn:nbn:se:nrm:diva-2017>

## ***Collolechia* revisited and a re-assessment of ascus characteristics in *Placynthiaceae* (*Peltigerales*, Ascomycota)**

**Alica KOŠUTHOVÁ, Samantha FERNÁNDEZ-BRIME, Martin WESTBERG and Mats WEDIN**

**Abstract:** We investigated the phylogenetic relationships in the cyanolichen family *Placynthiaceae* to test the current generic delimitations, where the monotypic *Collolechia* is currently accepted as distinct, based on differences in ascospores, ascus apex characteristics and the leprose thallus. Bayesian and maximum likelihood phylogenetic analyses of two sequence marker datasets confirmed that *Collolechia caesia* is nested within *Placynthium*, and should be called *Placynthium caesium* (Fr.) Jatta. We reassessed the spore and ascus characteristics and showed that *Placynthium caesium* falls well within the variation in *Placynthium* and is thus yet another example of a species that differs from close relatives by its crustose-leprose thallus structure.

**Key words:** ascus structure, classification, lichens, morphology, phylogenetics, taxonomy

*Accepted for publication 19 August 2015*

---

### **Introduction**

Lichenization is one of the most important life strategies among fungi in the Ascomycota, but only a comparatively small number of ascomycete lichen fungi (*c.* 1700 species; Rikkinen 2002) utilize cyanobacteria as photobionts. These lichens may still have a substantial impact on the ecosystems they inhabit by contributing fixed atmospheric nitrogen (Cornelissen *et al.* 2007; Nash 2008; Campbell *et al.* 2010), and many cyanobacterial lichens are sensitive to habitat disturbance such as changes in forest age, structure and composition (e.g. Price & Hochachka 2001; Scheidegger *et al.* 2002; Hedenås & Ericson 2008; Fedrowitz *et al.* 2012) and pollution (e.g. Goward & Arsenault 2000; Jovan 2008). The largest

group of lichenized Ascomycota featuring cyanobacteria as the main or sole photobiont is *Peltigerales* in the Lecanoromycetes (Wiklund & Wedin 2003; Lumbsch *et al.* 2004; Wedin *et al.* 2005; Schoch *et al.* 2009; Miadlikowska *et al.* 2014; Rikkinen 2015). *Peltigerales* are a comparatively recent group of fungi, the ancestor of which diverged from its Lecidealean sister-group in the early Jurassic, and the group diversified towards the end of the Jurassic-early Cretaceous (Prieto & Wedin 2013). *Peltigerales* currently includes ten families (Wedin *et al.* 2007, 2011; Spribille & Muggia 2013), one of which is *Placynthiaceae*.

*Placynthiaceae* comprises comparatively small, flat, rosette-forming, crustose to squamulose-lobate species where the thalli often produce a prothallus (Czeika & Czeika 2007; Jørgensen 2007). After the recent reclassification of *Vestergrenopsis* into the newly described family *Koerberiaceae* (Spribille & Muggia 2013), *Placynthiaceae* currently includes two genera: *Placynthium* with *c.* 30 species worldwide, and the monotypic *Collolechia*. *Placynthium* and *Collolechia* differ in thallus structure (squamulose vs. leprose-crustose thallus), ascus apex structure (apical caps/sheets vs. apical ring/tube) and spore shape and septation

---

A. Košuthová: Department of Cryptogams, Institute of Botany, Slovak Academy of Sciences, Dúbravská cesta 9, Bratislava, 845 23, Slovakia; and Department of Botany and Zoology, Faculty of Science, Masaryk University, Kotlářská 2, Brno, 602 00, Czech Republic.

S. Fernández-Brime, M. Westberg and M. Wedin (corresponding author): Department of Botany, Swedish Museum of Natural History, P.O. Box 50007, SE-104 05 Stockholm, Sweden. Email: mats.wedin@nrm.se

(ellipsoid, 1–3 septate in *Placynthium* vs. elongate, fusiform-acicular, pluriseptate in *Collolechia*; Jørgensen 2005, 2007). These observations were made on *Placynthium nigrum* (the type for *Placynthium*), and *Collolechia caesia*, respectively (Jørgensen 2005). Several authors, however, have observed tube structures in the asci of *Placynthium*, including in *P. nigrum* (Keuck 1977; Rambold & Triebel 1992; Gilbert & James 2009; Øvstedal *et al.* 2009; Wirth *et al.* 2013). The presence of a tube in *Placynthiaceae* was pointed out as supporting the sister-group relationship with *Collemataceae* by Wiklund & Wedin (2003). Several authors have also noted large variation within the group, including cap- or sheet-like structures, and tube- or ring-structures (Czeika & Czeika 2007; Spribille & Muggia 2013).

In Scandinavia, *Collolechia caesia* was for many years confused with *Placynthium garovaglio* (Fig. 1). The distinction between the species was clarified by Jørgensen (2005) who showed that in Scandinavia *C. caesia* was known only from a couple of localities on the Baltic island of Gotland, where it had not been collected since 1942. These are northern outposts for a species with an otherwise mainly southern warm-temperate distribution. True *Placynthium garovaglio* is not known from Sweden. In 2014, we visited some of the known Swedish localities to assess the status of *C. caesia*, and collected fresh material for DNA-based studies. In this study, we investigated the phylogenetic relationships of *Collolechia* to test the current generic delimitations in *Placynthiaceae*. We reinvestigated herbarium material of

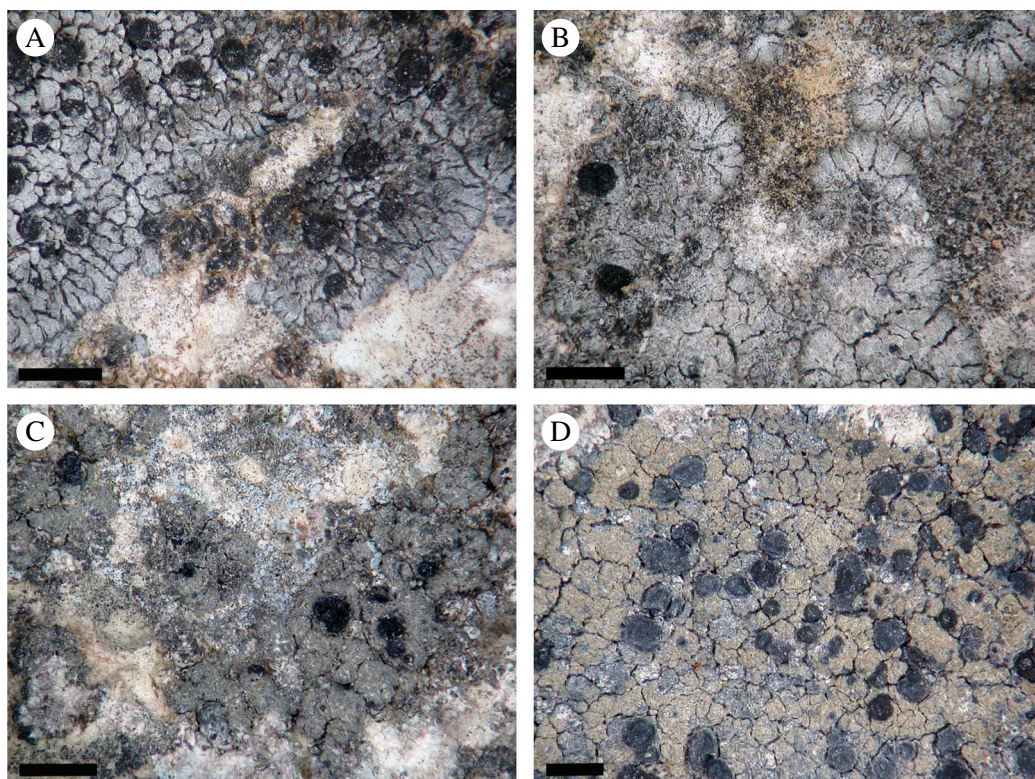


FIG. 1. Morphology of *Placynthium garovaglio* and “*Collolechia*” *caesia*. A & B, thallus of *Placynthium garovaglio* with distinct marginal lobes; C & D, “*Collolechia*” *caesia* with a leprose thallus lacking marginal lobes. Specimen origin. A, Palice 16564 (SAV); B, Palice 16954 (S); C, Košuthová GOT2 (S); D, Cleve s. n. (S). Scales = 1 mm.

In colour online.

*Collolechia* and *P. garovaglioi*, and studied the spore and ascus apex characteristics in these species and other selected *Placynthiaceae* in order to assess variation and potential natural groupings.

Material and Methods

Taxon sampling and morphological analysis

Material utilized for the phylogenetic study was mainly freshly collected specimens but was also supplemented with herbarium material from S, SAV and UPS and the personal herbaria of Z. Palice (hb. Palice) and J. Malíček (hb. Malíček). Origin of the material is summarized in Table 1. Asci were studied under oil-immersion, in hand-cut sections of apothecia which were pretreated with and squashed in KOH and subsequently stained with Lugol’s solution.

DNA extraction, amplification and sequencing

Total DNA was extracted from fresh material and herbarium specimens, and isolated using the DNeasy Plant Mini Kit (Qiagen, Germany) following the

manufacturer’s instructions. We amplified ≈0.6 kb of the small subunit of the mitochondrial rDNA (mtSSU) and ≈1.2 kb of nuclear mini-chromosome maintenance complex component 7 (*Mcm7*). Primer combinations used in this study were: mrSSU1 and mrSSU3R (Zoller et al. 1999) for the mtSSU; and MCM7-709for and MCM7-1348rev for the *Mcm7* (Schmitt et al. 2009). Symmetric PCR amplifications were performed using Illustra™ Hot Start PCR beads, according to the manufacturer’s instructions. PCR reactions for mtSSU were performed using one of two cycling conditions, depending on what worked with particular samples. The first was 95 °C for 5 min followed by 35–40 cycles (95 °C for 1 min, 54 °C for 50 s, and 72 °C for 1 min), with a final extension of 72 °C for 8 min. The second was as follows: 95 °C for 5 min followed by 4 cycles (95 °C for 1 min, 58 °C for 1 min, and 72 °C for 1 min), 4 cycles (95 °C for 1 min, 56 °C for 1 min, and 72 °C for 1 min) and 34 cycles (95 °C for 1 min, 60 °C for 1 min, and 72 °C for 1 min) with a final extension of 72 °C for 8 min. For the amplification of the *Mcm7*, the following cycling conditions were used: 95 °C for 5 min followed by 4 cycles (95 °C for 1 min, 60 °C for 1 min, and 72 °C for 1 min), followed by 36 cycles (95 °C for 1 min, 58 °C for 1 min, and 72 °C for 1 min), with a final extension of 72 °C for 8 min. After examination by gel electrophoresis, amplification products were purified using ExoSAP-IT (USB Corp., USA). Sequencing of both

TABLE 1. Specimen information and European Nucleotide Archive or GenBank accession numbers for the specimens included in the phylogenetic inference depicted in Figure 2. Sequences represented in bold font were generated in this study.

| Species name                      | Isolate no. | Geographical origin, voucher        | Accession number |                 |
|-----------------------------------|-------------|-------------------------------------|------------------|-----------------|
|                                   |             |                                     | mtSSU            | Mcm7            |
| <i>Collolechia caesia</i>         | AL147       | Turkey, Yazici 1037 (S)             | <b>LN876659</b>  | <b>LN876678</b> |
| <i>C. caesia</i>                  | AL149       | Sweden, Kořuthová GOT1 (S)          | <b>LN876660</b>  | <b>LN876679</b> |
| <i>C. caesia</i>                  | AL150       | Sweden, Kořuthová GOT2 (S)          | <b>LN876661</b>  | <b>LN876680</b> |
| <i>Placynthium asperellum</i>     | AL73        | Sweden, Westberg (S F263269)        | <b>LN876662</b>  | <b>LN876681</b> |
| <i>P. flabellusum</i>             | AL75        | Norway, Nordin 5666 (UPS)           | <b>LN876663</b>  | <b>LN876682</b> |
| <i>P. garovaglioi</i>             | AL146       | Turkey, Yazici 1123 (S)             | <b>LN876664</b>  | <b>LN876683</b> |
| <i>P. garovaglioi</i>             | AL148       | Turkey, Yazici 1125 (S)             | <b>LN876665</b>  | -               |
| <i>P. garovaglioi</i>             | AL93        | Slovakia, Palice 16564 (S)          | <b>LN876666</b>  | <b>LN876684</b> |
| <i>P. garovaglioi</i>             | AL94        | Slovakia, Palice 16954 (S)          | <b>LN876667</b>  | <b>LN876685</b> |
| <i>P. hungaricum</i>              | AL95        | Slovakia, Palice 12746 (hb. Palice) | <b>LN876668</b>  | <b>LN876686</b> |
| <i>P. hungaricum</i>              | AL96        | Romania, Malíček 5625 (hb. Malíček) | <b>LN876669</b>  | <b>LN876687</b> |
| <i>P. nigrum</i>                  | AL100       | Czech Republic, Svoboda (S)         | <b>LN876670</b>  | <b>LN876688</b> |
| <i>P. nigrum</i>                  | AL79        | Sweden, Nordin 5860 (UPS)           | <b>LN876671</b>  | <b>LN876689</b> |
| <i>P. pannariellum</i>            | AL81        | Sweden, Nordin 5787 (UPS)           | <b>LN876672</b>  | <b>LN876690</b> |
| <i>P. pulvinatum</i>              | AL80        | Sweden, Westberg (S F263268)        | <b>LN876673</b>  | <b>LN876691</b> |
| <i>P. rosulans</i>                | AL76        | Sweden, Hermansson 16011 (UPS)      | <b>LN876674</b>  | <b>LN876692</b> |
| <i>P. rosulans</i>                | AL77        | Norway, Nordin 5671 (UPS)           | <b>LN876675</b>  | <b>LN876693</b> |
| <i>P. sp. A</i>                   | AL91        | Spain, Malíček 5616 (hb. Malíček)   | <b>LN876676</b>  | <b>LN876694</b> |
| <i>P. sp. B</i>                   | AL97        | Albania, Malíček 4273 (hb. Malíček) | <b>LN876677</b>  | <b>LN876695</b> |
| <i>Collema nigrescens</i>         |             |                                     | EU982563         | JX992989        |
| <i>Lobaria pulmonaria</i>         |             |                                     | AY340504         | JX000169        |
| <i>Pannaria rubiginosa</i>        |             |                                     | AY340513         | JX993042        |
| <i>Scytinium lichenoides</i>      |             |                                     | DQ923120         | JX993021        |
| <i>Staurolemma omphalarioides</i> |             |                                     | EU982560         | JX993043        |

strands was performed with the Big Dye Terminator technology kit v3.1 (ABI PRISM, USA) using the PCR primers, and the additional internal PCR primers mrSSU2 and mrSSU2R (Zoller *et al.* 1999).

### Sequence alignments and analyses

Sequence fragments were assembled and edited using Sequencer 4.9 (Gene Codes Corp., Ann Arbor, MI) and Geneious version R8 (<http://www.geneious.com>, Kearse *et al.* 2012), and were subjected to BLAST searches (Zhang *et al.* 2000) for a first identity verification. Sequences were aligned manually in Aliview 1.09 (Larsson 2014). Introns and ambiguously aligned regions (*sensu* Lutzoni *et al.* 2000) were delimited manually and excluded from the analyses. We analyzed the mtSSU and *Mcm7* datasets separately using maximum likelihood (ML) as the optimization criterion, with GARLI v.2.0 (Zwickl 2006). Models of molecular evolution were estimated for each locus using the Akaike information criterion correction for finite sample sizes (AICc; Akaike 1973) implemented in jModeltest v.0.1.1 (Guindon & Gascuel 2003; Posada 2008). The models selected were TVM+I+G (Posada 2003) for mtSSU, TrNef+I (Tamura & Nei 1993) for *Mcm7* first codon position, F81+I (Felsenstein 1981) for *Mcm7* second codon position, and K80+G (Kimura 1980) for *Mcm7* third codon position. We performed ML searches setting the program to stop after 10 000 generations if no improvement of the Ln likelihood  $\leq 0.01$  was detected, with a maximum of 500 000. Topological incongruence between the two datasets was examined using the consensus trees from 1000 replicates of ML bootstrapping under the same models, on each locus separately (Mason-Gamer & Kellogg 1996). Because no incongruence was detected using a 70% reciprocal threshold, the two alignments were concatenated and one specimen (*Placynthium garovaglio* AL148) for which we have only the mtSSU sequence included. The concatenated alignment was deposited in TreeBASE (accession number S18034).

Phylogenetic relationships and confidence were inferred on the combined dataset using ML and Bayesian inference (B). For the ML analysis, the same settings were used as in the individual gene analyses using GARLI v.2.0, with the same models specified for each partition, for both ML search and ML bootstrap analyses. The Bayesian inference of the phylogeny was carried out by a Metropolis coupled Markov chain Monte Carlo (MCMCMC), as implemented in MrBayes 3.2.3 (Ronquist *et al.* 2012). The substitution models estimated using the AICc implemented in jModeltest v.0.1.1 were GTR+I+G (Tavaré 1986) for mtSSU, SYM+I (Zharkikh 1994) for *Mcm7* first codon position (MCM7\_c1), F81+I for *Mcm7* second codon position (MCM7\_c2), and K80+G for *Mcm7* third codon position (MCM7\_c3). The prior distributions settings were: all topologies equally probable and branch lengths followed an unconstrained gamma distribution (1, 0.1, 1, 1); the state frequencies followed a (1, 1, 1, 1) Dirichlet distribution for mtSSU and MCM7\_c2 and were equally probable for MCM7\_c1 and MCM7\_c3; the rate matrix for mtSSU and MCM7\_c1 followed a

(1, 1, 1, 1, 1) Dirichlet distribution, for the transition-transversion rates for MCM7\_c3 a beta (1, 1) distribution and was equally probable for MCM7\_c2; when applicable, proportion of invariable sites followed a uniform distribution (0, 1). Two parallel runs with four independent chains each were conducted for 20 million generations, with trees sampled at intervals of 500 generations. A burn-in sample of the first 10 000 trees was discarded for each run and the remaining trees were used to estimate branch lengths and posterior probabilities (PP). Convergence was monitored with the diagnostic tool provided by MrBayes 3.2.3., including the average standard deviation of splits between runs. All analyses were run in the CIPRES Science Gateway (Miller *et al.* 2010).

### Hypothesis testing

We specified two hypotheses to be tested. One equals the classification where *Placynthium* and *Collolechia* are two separate accepted genera ( $H_0$ : *Placynthium* monophyletic excluding *Collolechia*). The alternative hypothesis ( $H_1$ ) corresponds to the case where *Collolechia* is nested within a paraphyletic *Placynthium*. In order to contrast the hypotheses, we calculated Bayes factors by comparing the ratio of the marginal likelihoods of each hypothesis. One common approach is to estimate the marginal likelihoods from constrained and unconstrained Bayesian analyses (e.g., Nelsen & Gargas 2009; Otálora *et al.* 2014; Westberg *et al.* 2015). Here, however, we followed the novel approach proposed in Bergsten *et al.* (2013), in which the marginal likelihoods are calculated from two alternative topologies after the specification of equally informed priors (constraints). Interpretation of Bayes factor values followed Kass & Raftery (1995). We calculated the marginal likelihoods using the stepping-stone sampling algorithm implemented in MrBayes 3.2.3., which has proved to be a more accurate estimator of the model likelihoods than the harmonic mean estimator calculated in the MCMC output (Ronquist *et al.* 2011; Bergsten *et al.* 2013). We ran the stepping-stone sampling taking 50 steps for a total of 10 200 000 generations, sampling every 100th generation, and discarding the first 200 000 generations as burn-in. The contribution to the marginal likelihood in each step was estimated from a sample size of 2000.

### Results

New sequences from two loci were produced for the 19 specimens, except for *Placynthium garovaglio* AL148 for which only mtSSU was obtained. These were aligned with 10 sequences from five taxa representing several families of the order *Peltigerales* (i.e., *Collema*aceae, *Lobaria*aceae and *Pannaria*aceae), retrieved from GenBank. *Lobaria pulmonaria* was selected as outgroup to root the tree.

Voucher information for newly produced sequences and accession numbers are listed in Table 1. The matrix of aligned sequences included 1588 sites (635 for *Mcm7* and 953 for mtSSU), which was reduced to 1311 sites (of which 297 were parsimony-informative) after the exclusion of the flanking primer regions, introns, and ambiguously aligned regions.

The most likely tree from ML (Fig. 2) with ln likelihood = -6126.8160 recovered a topology with 22 resolved internodes, of which 17 were significantly supported (i.e., ML-BS ≥ 70%). In the Bayesian analysis, the value of the standard deviation of splits between runs was 0.000632, below the threshold of 0.01 established for convergence (Ronquist *et al.* 2011). This was further

confirmed as the PSRF of all parameters and bipartitions was close to 1.0. The 50% majority-rule consensus trees of the 60 000 trees showed 21 resolved internodes, of which 14 were significantly supported (PP ≥ 0.95). As the topologies had no significant conflicts, only the ML tree is shown in Fig. 2, with the support indicated for both analyses. In both phylogenetic analyses, *Collolechia* was recovered as monophyletic with strong support (BS = 95%, PP = 1.00), and nested within *Placynthium* (BS = 99%, PP = 1.00).

The two independent runs for each stepping-stone MCMC sampling conducted to calculate the marginal likelihood of each alternative topology reached convergence, as shown by the values of split frequencies <0.01. The estimation of the marginal log

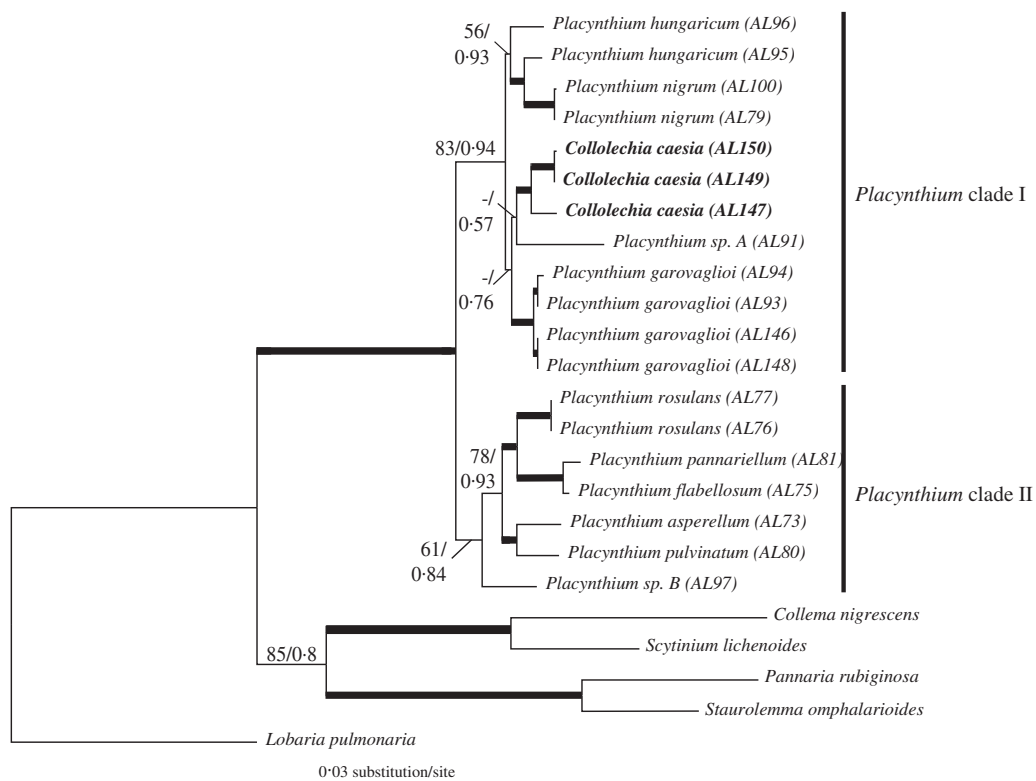


FIG. 2. Most likely tree (ln likelihood = -6126.8160) based on a combined matrix of mtSSU and *Mcm7* showing *Collolechia* nested within *Placynthium*. Internodes with bootstrap values ≥ 70% and posterior probabilities ≥ 0.95 are represented by thick lines. Numbers above other internodes indicate ML bootstrap support (only when values ≥ 50%) followed by posterior probabilities (only when values ≥ 0.5%) for the Bayesian analysis.



likelihood was  $-6123.60$  for the hypothesis in which *Placynthium* was constrained to be monophyletic and  $-6114.30$  for the alternative hypothesis in which *Collolechia* was nested within *Placynthium*. The Bayes factor value was 18.6. We compared this value to the reference table provided by Kass & Raftery (1995, p.777) that states  $2 \times \log_e(\text{BF}_{10})$  values  $>10$  as strong evidence against  $H_0$ .

### Discussion

Here, we show that *Collolechia* is clearly nested within *Placynthium* (Fig. 2), which is composed of two monophyletic subgroups, one of which contains both *Collolechia* and the type species of *Placynthium*, *P. nigrum*, as well as *P. garovaglioi*, *P. hungaricum*, and the potentially undescribed *Placynthium* sp. A. As a consequence, *Collolechia caesia* should be classified in *Placynthium*. The nomenclature of “*Collolechia*” *caesia* is complicated, but fortunately Jørgensen (2005) has clarified the situation and the reader is referred to this work for details regarding author citation, typification, and synonymy. When treated in *Placynthium*, the correct name for this species is *Placynthium caesium* (Fr.) Jatta.

### *Placynthium caesium* (Fr.) Jatta

*Syll. Lich. Ital.*: 38 (1900).—*Lecidea contigua* var. *caesia* Fr., *Lich. Eur.*: 302 (1831).—*Collolechia caesia* (Fr.) A. Massal. *Geneac. Lich.*: 7 (1854); type: (France) Gallia merid., Dufour (UPS) lectotypus, designated by Jørgensen 2005).

This re-synonymization contradicts the suggestion by Jørgensen (2005), who justified treating the two genera as distinct based on their different ascus, spore and thallus characteristics. The ascus characters are difficult to study in many *Placynthium* species; the asci are small and the structures indistinct, and the variation between ascus developmental stages within one hymenium is frequently quite confusing. We can still confirm that several *Placynthium* species do have a tube structure in their asci, a trait considered characteristic of “*Collolechia*” (Jørgensen 2005). *Placynthium caesium*, *P. garovaglioi*, *P. hungaricum*, *Placynthium* sp. A,

and *P. nigrum* (the type of *Placynthium*) have a distinct amyloid tube structure in the ascus apex (Fig. 3). Spribille & Muggia (2013) provided a very useful overview of the ascus structures in *Peltigerales*, and included the amyloid tube structure in the *Micarea*-type. A tube structure is reported in a number of *Placynthium* species by Keuck (1977) and Czeika & Czeika (2007), and in the *Collemataceae* (Rambold & Triebel 1992), and hence could be seen as a synapomorphy for the *Placynthiaceae* and *Collemataceae* (Wiklund & Wedin 2003). The tube in *Placynthium* is frequently flaring and the apical opening is often visible only from above (Fig. 3A). Our observations confirm that other *Placynthium* species sampled here (i.e. *P. asperellum*, *P. flabellosum*, and *P. rosulans*) have an amyloid cap-like structure (Fig. 3D), corresponding to the *Vahliella*-type of Spribille & Muggia (2013), as previously reported by Keuck (1977) and Spribille & Muggia (2013). The asci in the potentially undescribed *Placynthium* sp. B were very difficult to interpret and we await more material to study this further. We have not found any apothecia in the samples of *P. pannariellum* and *P. pulvinatum*, both of which are very rarely fertile. Although we have only investigated a fraction of the species in *Placynthium*, each ascus character state is correlated with one of the two monophyletic groups identified within the genus. This, however, needs further study to confirm.

All investigated samples of *Placynthium caesium* and *P. garovaglioi* have long spores (c.  $26\text{--}38 \times 3\text{--}5 \mu\text{m}$  in *P. caesium* and c.  $24\text{--}35 \times 3.5\text{--}6.5 \mu\text{m}$  in *P. garovaglioi*) with 3(–5) septa. The difference in spore length between the two species appears less conspicuous than proposed by Jørgensen (2005). Long, pluriseptate spores are also produced in several other *Placynthium* species, and in our material, *P. flabellosum*, *P. rosulans*, and *Placynthium* sp. B have more than one septum. *Placynthium pulvinatum* which is shown here (Fig. 2) to be only distantly related to *P. caesium* is, according to the original description (Øvstedal *et al.* 2009), another species with long, pluriseptate

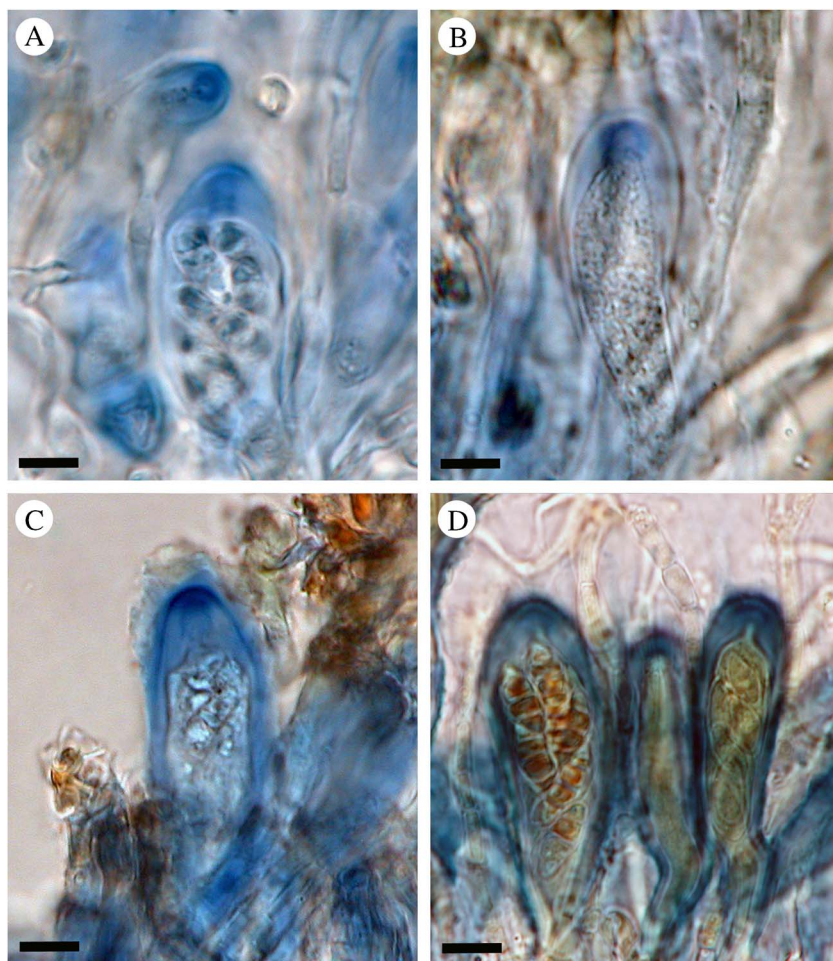


FIG. 3. Ascus characteristics in *Placynthium*. A–C, tube structures of the “*Micarea*-type”; D, cap-like structure of the “*Vahlia*-type”. A, *Placynthium nigrum*, type species of *Placynthium* (Nordin 5860, UPS); B, *Placynthium* (“*Collolechia*”) *caesium* (Košťuthová GOT2, S); C, *Placynthium garovaghii* (Palice 16954, S); D, *Placynthium flabelliforme* (Nordin 5666, UPS). Scales = 10  $\mu$ m. In colour online.

spores, again suggesting that this character state is widespread in the genus. *Placynthium nigrum* has shorter (c.  $10\text{--}12 \times 5 \mu\text{m}$ ), mainly 1(–3)-septate spores.

In conclusion, when the phylogeny suggests that the two groups are not distinct and the claimed differences in ascus and spore do not hold up to scrutiny, it appears that “*Collolechia*” *caesia* should be better treated as a *Placynthium* species with a crustose-leprose thallus structure. It is not unusual to find examples of closely related

lichens, including cyanolichens, which differ in thallus structure. *Caloplaca chrysodeta* and *Micarea leprosa* (Tønsberg 1992) are both examples of leprose representatives in green-algal crustose genera, and the cyanolichen “*Moelleropsis*” *nebulosa* was recently shown to be a leprose *Fuscopannaria* (Ekman *et al.* 2014). Also, in the spore and ascus characteristics, *Placynthium caesium* is not unique compared to other *Placynthium* species and the results of the molecular phylogeny are consistent with the morphology.



*Material investigated* (Placynthium caesium): **France:** Gallia merid., Dufour (UPS L104293, lectotype).—**Germany:** Bayern: ad saxa jurassica prope in valle Wiesenthal Bavariae, Arnold s. n., (S F155260, F155943); Obersdorf (Tiefenbach) in Algäu, Rehm s. n. (S F155268); Streitberg Oberfranken, 1865, (S F15524); Eichstätt, 1956, (S F155248); Muggendorf, Arnold s. n. (S F155266); 1954, (S F155259).—**Italy:** Massalongo s. n. (S F155283).—**Slovakia:** Žilinský kraj, Kľačany, 1882, *Lojka* s. n. (S F155283); Muránska planina Mts, Pohronská Polhora – Bánovo, 2014, *Gutová & Fačkovcová* s. n. (SAV).—**Sweden:** Gotland: Årdre par., Tviburg (v. Torsburgen), 1943, *Degelius* s. n. (S F155213); 1963, *Degelius* s. n. (UPS L159251); Hangö par., Ire, *Floderus* (UPS L130317); Irevik, 2014, *Košuthová* GOT2 (S); *Kräklingbo* par., Torsburgen, 1857, *Stenhammar & Floderus* s. n. (S F155224); 1857, *Lönnroth* s. n. (S F155216, F155217, F155221); 1864, *Cleve* s. n. (S F155209, UPS L137454); 1871, *Molér* s. n. (S F155218, S F155215, UPS L137459); 1874, *Elmqvist* s. n. (S F155225, UPS L137458); 1880, *Blomberg* s. n. (S F155223; UPS L137452); 1889, *Hellborn* s. n. (S F155222); 1918, *Malme*, *Malme*, Lich. Suec. Exs no 743 (S F155214, UPS L109332); 2014, *Košuthová* GOT1 (S); *Lojsta* par., *Lojsta*, *Lönnroth* s. n. (S F155210); *Lojstaberger*, *Lönnroth* s. n. (S F155934; UPS L137455); *Stenkyrka* par., *Lickersham*, 1869, *Laurers* s. n. (UPS L137460); *Vesterheide* par., *Hallbros alvar*, 1917, *Malme* (S F155220); 1918, *Malme* (S F155211); *Kneippbyn*, 1918, *Magnusson* 2330 (UPS L160437); *Kneippbyn*, 2014, *Košuthová* GOT3 (S).—**Switzerland:** Schwyz, Pilatus, *Hegetschweiler & Hegetschweiler* s. n. (S F155227).—**Turkey:** Bucak, 2013, *Yazici* 1037 (S).

*Material investigated for comparison* (Placynthium garovaglio): **Slovakia:** W. Carpathians, Dolina Siedmych, 2013, *Palice* 16564 (SAV); W. Carpathians, Tisovec, 2013, *Palice* 16954 (S).—**Spain:** Navarra: Estella, 1983, *Santesson* 30775 (UPS L160445).—**Poland:** Malopolskie: Tatry, Giewont 1954, *Tobolewski* 76 (UPS L160450).—**Turkey:** Burdur: 2012, *Yazici* 1123 (S), 1125 (S).

This study was supported by funding from the Swedish Research Council grant 621-2012-3990, to M. Wedin. M. Westberg was funded by the Swedish Taxonomy Initiative, and A. Košuthová was funded by Štefan Schwarz Fund SAS, and EEA and Norway grants no. NF-CZ07-ICP-3-104-2015. We are grateful to the staff at the Molecular Systematics Laboratory at the Swedish Museum of Natural History, in particular Bodil Cronholm, for laboratory assistance. We thank Dr Johannes Bergsten for his helpful discussions and guidance regarding the hypothesis testing analyses. The staff at S, SAV, and UPS, and Z. Palice and J. Malíček, are gratefully thanked for the loan of material, and A. Aptroot kindly gave us samples from Turkey.

#### REFERENCES

Akaike, H. (1973) Information theory and an extension of the maximum likelihood principle. In *Proceedings of the 2nd International Symposium on Information*

*Theory* (B. N. Petrov & F. Csaki, eds): 267–281. Budapest: Akademiai Kiado.

- Bergsten, J., Nilsson, A. N. & Ronquist, F. (2013) Bayesian tests of topology hypotheses with an example from diving beetles. *Systematic Biology* **62**: 660–673.
- Campbell, J., Fredeen, A. L. & Prescott, C. E. (2010) Decomposition and nutrient release from four epiphytic lichen litters in sub-boreal spruce forests. *Canadian Journal of Forest Research* **40**: 1473–1484.
- Cornelissen, J. H. C., Lang, S. I., Soudzilovskaia, N. A. & During, H. J. (2007) Comparative cryptogam ecology: a review of bryophyte and lichen traits that drive biogeochemistry. *Annals of Botany* **99**: 987–1001.
- Czeika, H. & Czeika, G. (2007) *Placynthium* in den Alpen und Karpaten sowie in benachbarten Gebieten. *Herzogia* **20**: 29–51.
- Ekman, S., Wedin, M., Lindblom, L. & Jørgensen, P. M. (2014) Extended phylogeny and a revised generic classification of the *Pannariaceae* (Peltigerales, Ascomycota). *Lichenologist* **46**: 627–656.
- Fedrowitz, K., Kuusinen, M. & Snäll, T. (2012) Metapopulation dynamics and future persistence of epiphytic cyanolichens in a European boreal forest ecosystem. *Journal of Applied Ecology* **49**: 493–502.
- Felsenstein, J. (1981) Evolutionary trees from DNA sequences: a maximum likelihood approach. *Journal of Molecular Evolution* **17**: 368–376.
- Gilbert, O. L. & James, P. W. (2009) *Placynthium* (Ach.) Gray (1821). In *The Lichens of Great Britain and Ireland* (C. W. Smith, A. Aptroot, B. J. Coppins, A. Fletcher, O. L. Gilbert & P. A. Wolsley, eds): 714–718. London: British Lichen Society.
- Goward, T. & Arsenault, A. (2000) Cyanolichens and conifers: implications for global conservation. *Forest, Snow and Landscape Research* **75**: 303–318.
- Guindon, S. & Gascuel, O. (2003) A simple, fast, and accurate algorithm to estimate large phylogenies by maximum likelihood. *Systematic Biology* **52**: 696–704.
- Hedenäs, H. & Ericson, L. (2008) Species occurrences at stand level cannot be understood without considering the landscape context: cyanolichens on aspen in boreal Sweden. *Biological Conservation* **141**: 710–718.
- Jørgensen, P. M. (2005) *Placynthium garovaglio* not present in Scandinavia. *Graphis Scripta* **17**: 3–7.
- Jørgensen, P. M. (2007) *Placynthiaceae*. In *Nordic Lichen Flora Volume 3. Cyanolichens* (T. Ahti, P. M. Jørgensen, H. Kristinsson, R. Moberg, U. Søchting & G. Thor, eds): 134–142. Uppsala: Nordic Lichen Society.
- Jovan, S. (2008) *Lichen bioindication of biodiversity, air quality, and climate: baseline results from monitoring in Washington, Oregon, and California*. General Technical Report PNW-GTR-737. Portland, Oregon: US Department of Agriculture, Forest Service, Pacific Northwest Research Station.
- Kass, R. E. & Raftery, A. E. (1995) Bayes factors. *Journal of the American Statistical Association* **90**: 773–795.

- Kearse, M., Moir, R., Wilson, A., Stones-Havas, S., Cheung, M., Sturrock, S., Buxton, S., Cooper, A., Markowitz, S., Duran, C. *et al.* (2012) Geneious Basic: an integrated and extendable desktop software platform for the organization and analysis of sequence data. *Bioinformatics* **28**: 1647–1649.
- Keuck, G. (1977) Ontogenetisch-systematische Studie über *Erioderma*. *Bibliotheca Lichenologica* **6**: 1–175.
- Kimura, M. (1980) A simple method for estimating evolutionary rates of base substitutions through comparative studies of nucleotide sequences. *Journal of Molecular Evolution* **16**: 111–120.
- Larsson, A. (2014) AliView: a fast and lightweight alignment viewer and editor for large datasets. *Bioinformatics* **30**: 3276–3278.
- Lumbsch, H. T., Schmitt, I., Palice, Z., Wiklund, E., Ekman, S. & Wedin, M. (2004) Supraordinal phylogenetic relationships of Lecanoromycetes based on a Bayesian analysis of combined nuclear and mitochondrial sequences. *Molecular Phylogenetics and Evolution* **31**: 822–832.
- Lutzoni, F., Wagner, P., Reeb, V. & Zoller, S. (2000) Integrating ambiguously aligned regions of DNA sequences in phylogenetic analyses without violating positional homology. *Systematic Biology* **49**: 628–651.
- Mason-Gamer, R. J. & Kellogg, E. A. (1996) Testing for phylogenetic conflict among molecular datasets in the tribe *Triticeae* (Gramineae). *Systematic Biology* **45**: 524–545.
- Miadlikowska, J., Kauff, F., Högnabba, F., Oliver, J. C., Molnár, K., Fraker, E., Gaya, E., Hafellner, J., Hofstetter, V., Gueidan, C., *et al.* (2014) A multi-gene phylogenetic synthesis for the class Lecanoromycetes (Ascomycota): 1307 fungi representing 1139 infrageneric taxa, 312 genera and 66 families. *Molecular Phylogenetics and Evolution* **79**: 132–168.
- Miller, M. A., Pfeiffer, W. & Schwartz, T. (2010) Creating the CIPRES Science Gateway for inference of large phylogenetic trees. In *Proceedings of the Gateway Computing Environments Workshop (GCE)*, 14 November 2010, New Orleans, Louisiana, pp. 1–8.
- Nash III, T. H. (2008) Nitrogen, its metabolism and potential contribution to ecosystems. In *Lichen Biology*, 2nd ed. (T. H. Nash III ed.): 216–233. Cambridge: Cambridge University Press.
- Nelsen, M. P. & Gargas, A. (2009) Symbiont flexibility in *Thamnia vermicularis* (Pertusariales: Icmadophilaceae). *Bryologist* **112**: 404–417.
- Otálora, M., Jørgensen, P. M. & Wedin, M. (2014) A revised generic classification of the jelly lichens, *Collemataceae*. *Fungal Diversity* **64**: 275–293.
- Øvstedal, D. O., Tønsberg, T. & Elvebakk, A. (2009) The lichen flora of Svalbard. *Sommerfeltia* **33**: 1–393.
- Posada, D. (2003) Using Modeltest and PAUP\* to select a model of nucleotide substitution. In *Current Protocols in Bioinformatics* (A. D. Baxevanis, D. B. Davison, R. D. M. Page, G. A. Petsko, L. D. Stein & G. D. Stormo, eds): 6.5.1–6.5.14. New Jersey: John Wiley & Sons.
- Posada, D. (2008) jModeltest: phylogenetic model averaging. *Molecular Biology and Evolution* **25**: 1253–1256.
- Price, K. & Hochachka, G. (2001) Epiphytic lichen abundance: effects on stand age and composition in coastal British Columbia. *Ecological Applications* **11**: 904–913.
- Prieto, M. & Wedin, M. (2013) Dating the diversification of the major lineages of Ascomycota (Fungi). *PLoS ONE* **8**: e65576. doi: 10.1371/journal.pone.0065576.
- Rambold, G. & Triebel, D. (1992) The inter-lecanoralean associations. *Bibliotheca Lichenologica* **48**: 1–201.
- Rikkinen, J. (2002) Cyanolichens: an evolutionary overview. In *Cyanobacteria in Symbiosis* (A. N. Rai, B. Bergman & U. Rasmussen, eds): 31–72. Dordrecht: Kluwer Academic Publishers.
- Rikkinen, J. (2015) Cyanolichens. *Biodiversity and Conservation* **4**: 973–993.
- Ronquist, F., Huelsenbeck, J. & Teslenko, M. (2011) *Draft MrBayes version 3.2 Manual: Tutorials and Model Summaries*. [http://mrbayes.sourceforge.net/mb3.2\\_manual.pdf](http://mrbayes.sourceforge.net/mb3.2_manual.pdf). Accessed 27 February 2015.
- Ronquist, F., Teslenko, M., van der Mark, P., Ayres, D. L., Darling, A., Höhna, S., Larget, B., Liu, L., Suchard, M. A. & Huelsenbeck, J. P. (2012) MrBayes 3.2: efficient Bayesian phylogenetic inference and model choice across a large model space. *Systematic Biology* **61**: 539–542.
- Scheidegger, C., Groner, U., Keller, C. & Stofer, S. (2002) Biodiversity assessment tools - lichens. In *Monitoring with Lichens - Monitoring Lichens*. NATO Science Series. IV. (P. L. Nimis, C. Scheidegger & P. A. Wolesey, eds): 359–365. Dordrecht: Kluwer Academic Publishers.
- Schmitt, I., Crespo, A., Divakar, P. K., Fankhauser, J. D., Herman-Sackett, E., Kalb, K., Nelsen, N. P., Nelson, N. A., Rivas-Plata, E., Shimp, A. D. *et al.* (2009) New primers for promising single-copy genes in fungal phylogenetics and systematics. *Persoonia* **23**: 35–40.
- Schoch, C. L., Sung, G. H., López-Giráldez, F., Townsend, J. P., Miadlikowska, J., Hofstetter, V., Robbertse, B., Matheny, P. B., Kauff, F., Wang, Z. *et al.* (2009) The Ascomycota tree of life: a phylum wide phylogeny clarifies the origin and evolution of fundamental reproductive and ecological traits. *Systematic Biology* **58**: 224–239.
- Spridille, T. & Muggia, L. (2013) Expanded taxon sampling disentangles evolutionary relationships and reveals a new family in *Peltigerales* (Lecanoromycetideae, Ascomycota). *Fungal Diversity* **58**: 171–184.
- Tamura, K. & Nei, M. (1993) Estimation of the number of nucleotide substitutions in the control region of mitochondrial-DNA in humans and chimpanzees. *Molecular Biology and Evolution* **10**: 512–526.
- Tavaré, S. (1986) Some probabilistic and statistical problems in the analysis of DNA sequences. In *Some Mathematical Questions in Biology-DNA Sequence Analysis* (R. M. Miura, ed.): 57–86. Rhode Island: American Mathematical Society.

- Tønsberg, T. (1992) The sorediate and isidiate, corticolous, crustose lichens in Norway. *Sommerfeltia* **14**: 1–331.
- Wedin, M., Wiklund, E., Crewe, A., Döring, H., Ekman, S., Nyberg, Å., Schmitt, I. & Lumbsch, H. T. (2005) Phylogenetic relationships of the Lecanoromycetes (Ascomycota) as revealed by analyses of mtSSU and nLSU rDNA sequence data. *Mycological Research* **109**: 159–172.
- Wedin, M., Jørgensen, P. M. & Wiklund, E. (2007) Molecular phylogeny suggests the establishment of *Massalongiaceae*, fam. nov. (Lecanorales, Lecanoromycetes, Ascomycota). *Lichenologist* **39**: 61–67.
- Wedin, M., Jørgensen, P. M. & Ekman, S. (2011) *Vahliellaceae*, a new family of cyanobacterial lichens (Peltigerales, Ascomycota). *Lichenologist* **43**: 67–72.
- Westberg, M., Millanes, A. M., Knudsen, K. & Wedin, M. (2015) Phylogeny of the *Acarosporaceae* (Lecanoromycetes, Ascomycota, Fungi) and the evolution of carbonized ascomata. *Fungal Diversity* **73**: 145–158.
- Wiklund, E. & Wedin, M. (2003) The phylogenetic relationships of the cyanobacterial lichens in the *Lecanorales* suborder *Peltigerineae*. *Cladistics* **19**: 419–431.
- Wirth, V., Hauck, M. & Schultz, M. (2013) *Die Flechten Deutschlands, Band 1 & 2*. Stuttgart: Eugen Ulmer.
- Zhang, Z., Schwartz, S., Wagner, L. & Miller, W. (2000) A greedy algorithm for aligning DNA sequences. *Journal of Computational Biology* **7**: 203–214.
- Zharkikh, A. (1994) Estimation of evolutionary distances between nucleotide sequences. *Journal of Molecular Evolution* **39**: 315–329.
- Zoller, S., Scheidegger, C. & Sperisen, C. (1999) PCR primers for the amplification of mitochondrial small subunit ribosomal DNA of lichen-forming ascomycetes. *Lichenologist* **31**: 511–516.
- Zwickl, D. J. (2006) *Genetic algorithm approaches for the phylogenetic analysis of large biological sequence datasets under the maximum likelihood criterion*. Ph.D thesis, University of Texas at Austin.