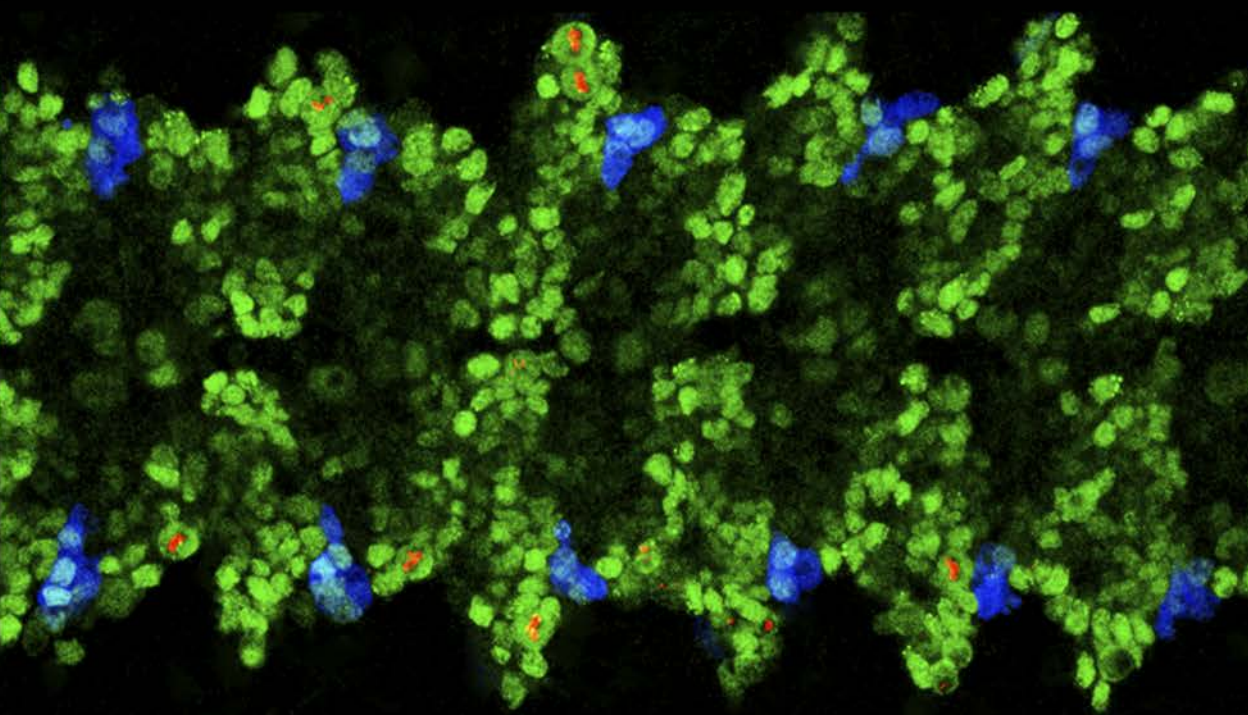


# Genetic pathways controlling CNS development

The role of Notch signaling in regulating  
daughter cell proliferation in *Drosophila*

**Caroline Bivik Stadler**



# FACULTY OF MEDICINE AND HEALTH SCIENCES

Linköping University Medical Dissertations No. 1542, 2016

Department of Clinical and Experimental Medicine

Linköping University

Sweden

[www.liu.se](http://www.liu.se)

